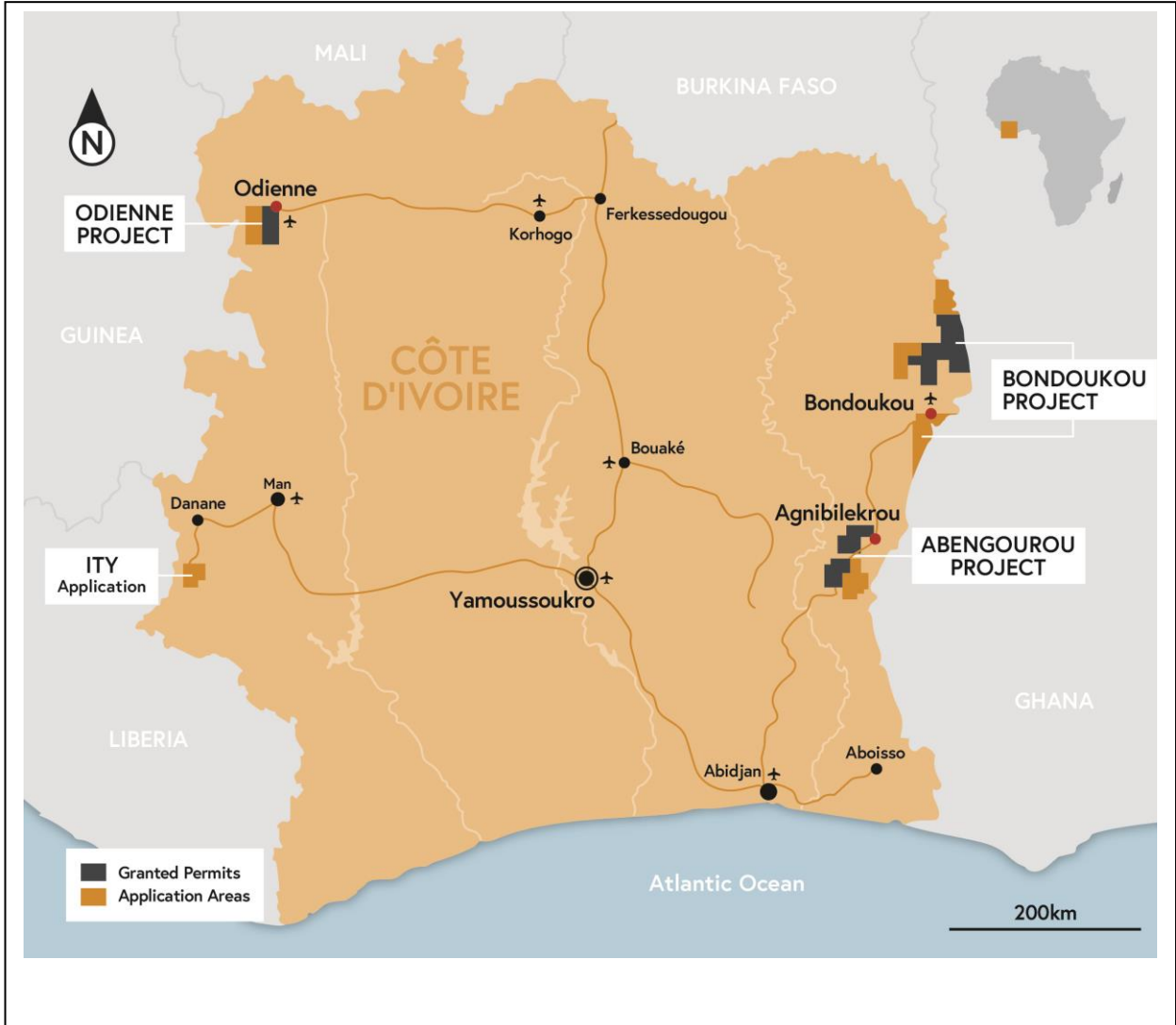


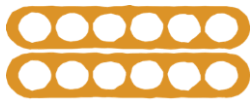
AWALÉ
RESOURCES

June 28, 2018

Awalé Resources Defines Extensive Gold in Soil Anomalies at the Odienné Project, Côte d'Ivoire.

Figure 1: Awalé's District focussed Project Areas





AWALÉ
RESOURCES

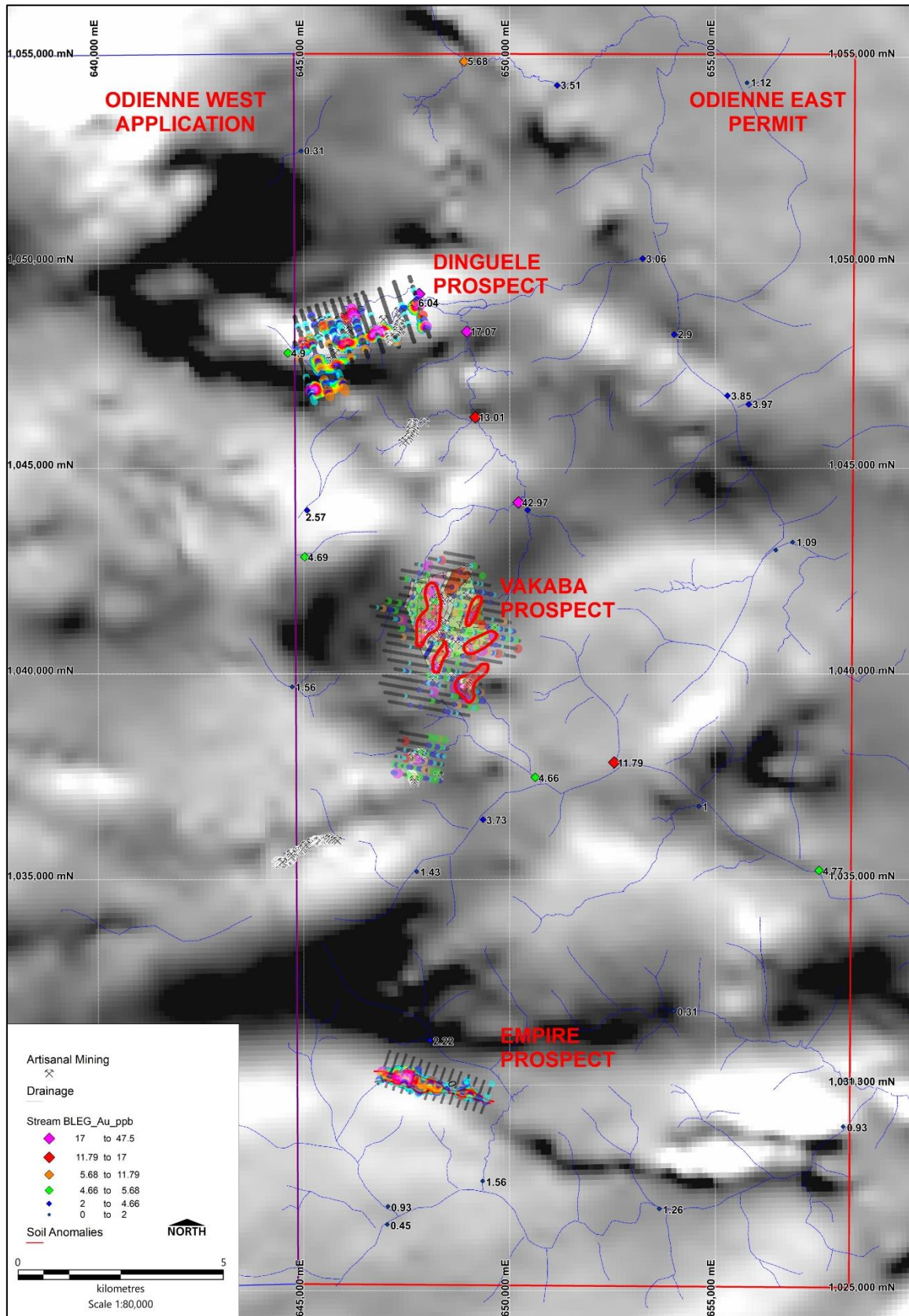
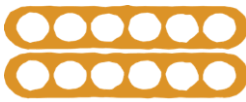


Figure 2: Stream BLEB sampling over TMI regional magnetics. Initial soil sample targets shown. All three targets have significant gold in soil anomalies.



AWALÉ
RESOURCES

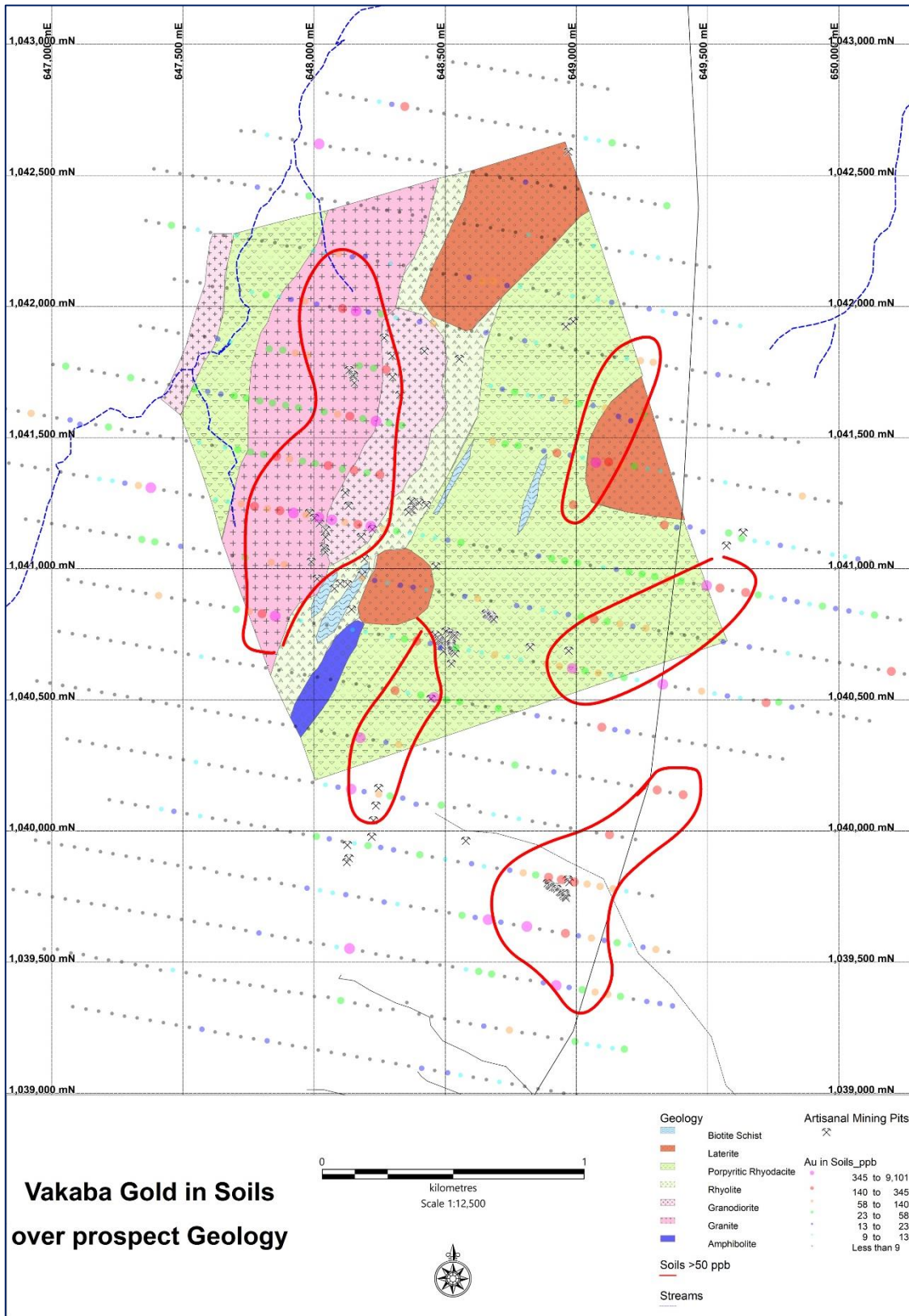
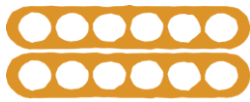


Figure 3: Gold in Soils over prospect geology, Vakaba Target. One 1.5 km long >50ppb anomaly, including >300ppb core anomalies. Four 700m long sub-parallel anomalies



AWALÉ
RESOURCES



Photo 1: Sample traverse from old costean returned 5.36 Grams per tonne. Sample taken from footwall of laminated quartz vein hosted within weathered sheared felsic intrusive. Alteration appears to be Silica/sericite +/- albite. Galena was observed in some localities.

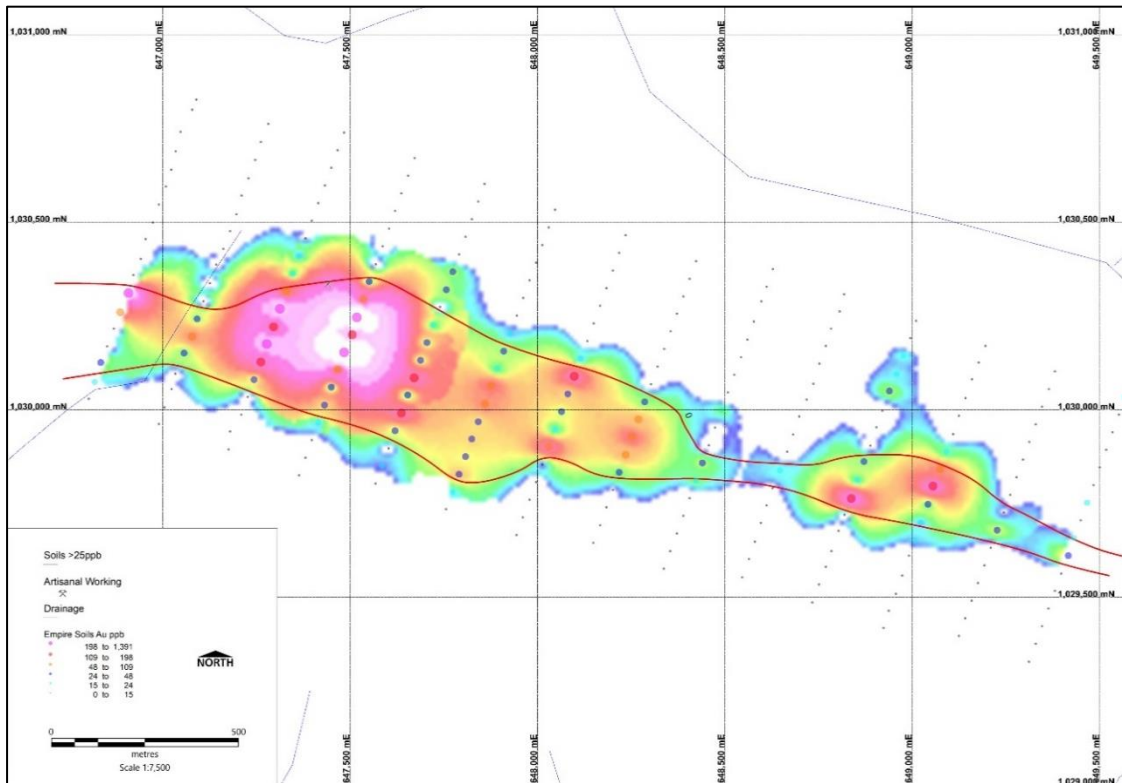


Figure 4: Empire Prospect, gold in soils (ppb). 2 km long >50ppb anomaly with 500m >200ppb core.

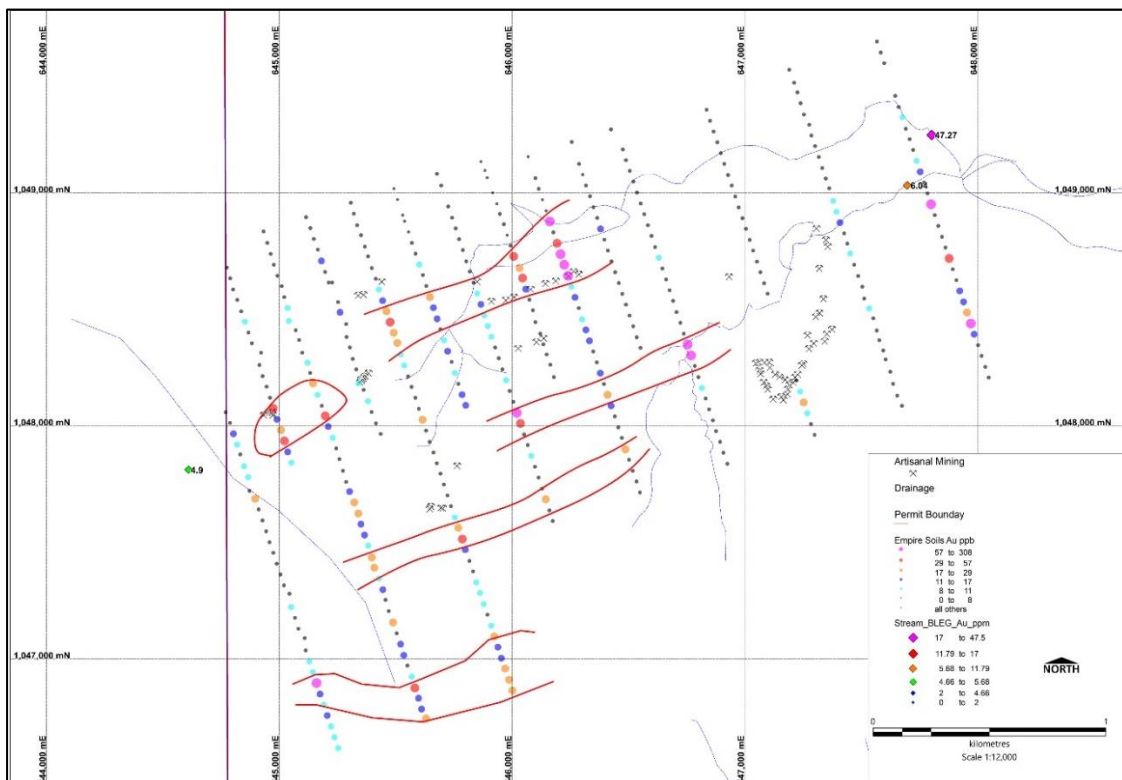
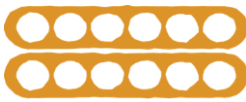


Figure 5: Denguélé Prospect 4x 1km long >20ppb anomalies. Potential anomalism will continue to the east/northeast where gold signature is masked by a laterite cover sequence that was not penetrated during the sampling program.



AWALÉ
RESOURCES

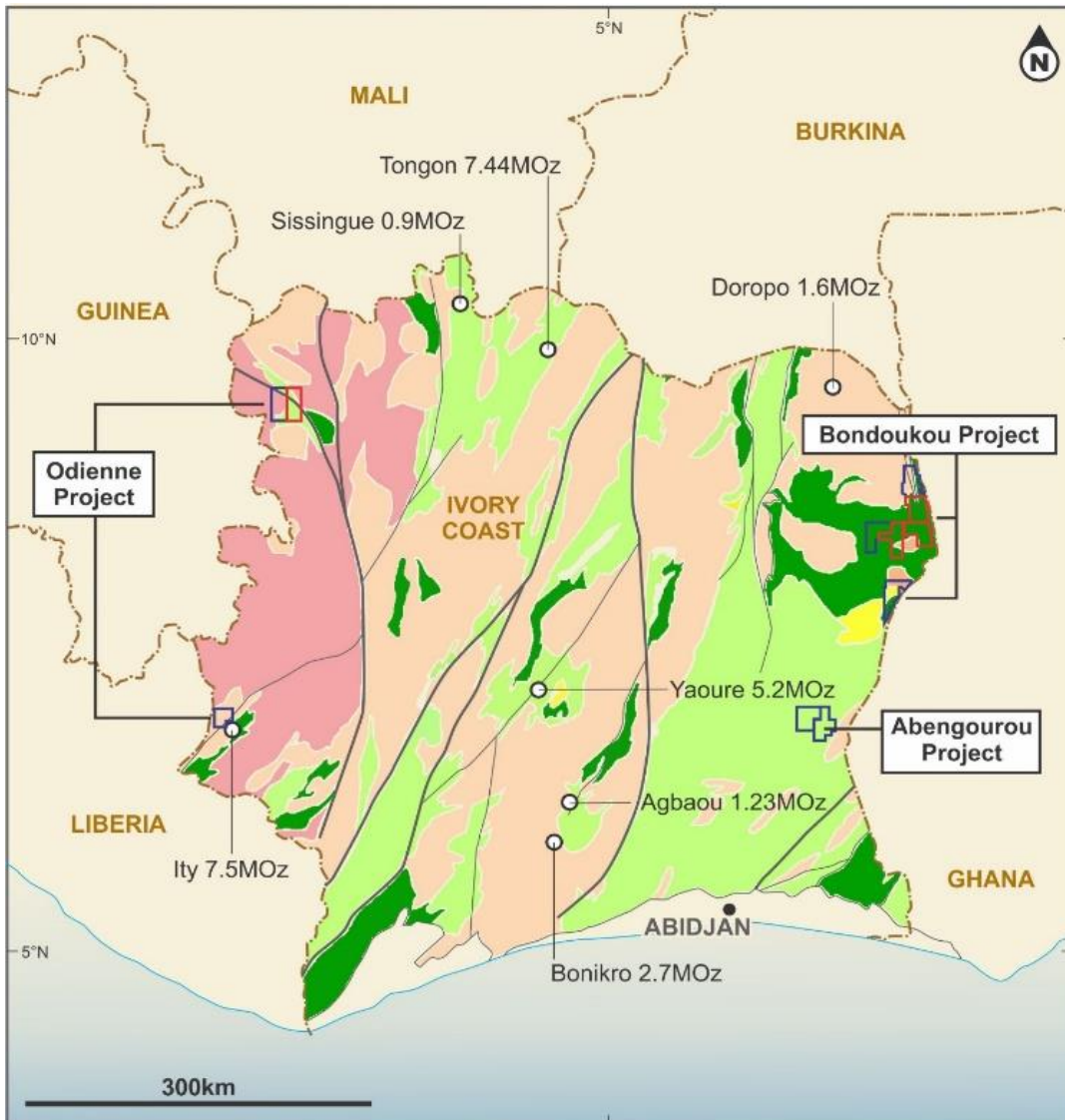


Figure 6: Odienné Location over Regional geology. Located on a splay of the North South Sassandra fault.