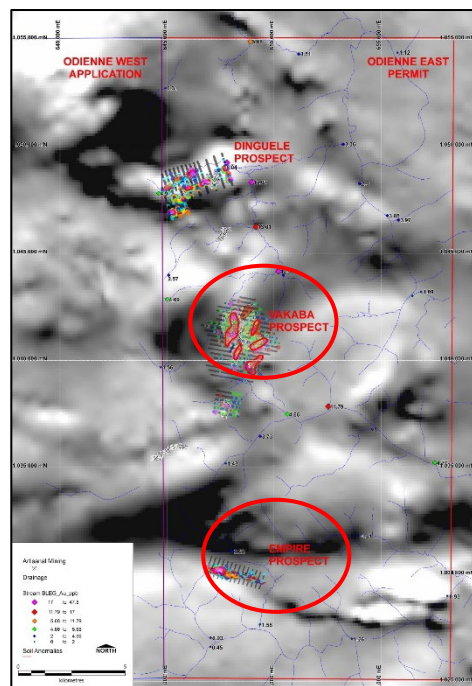
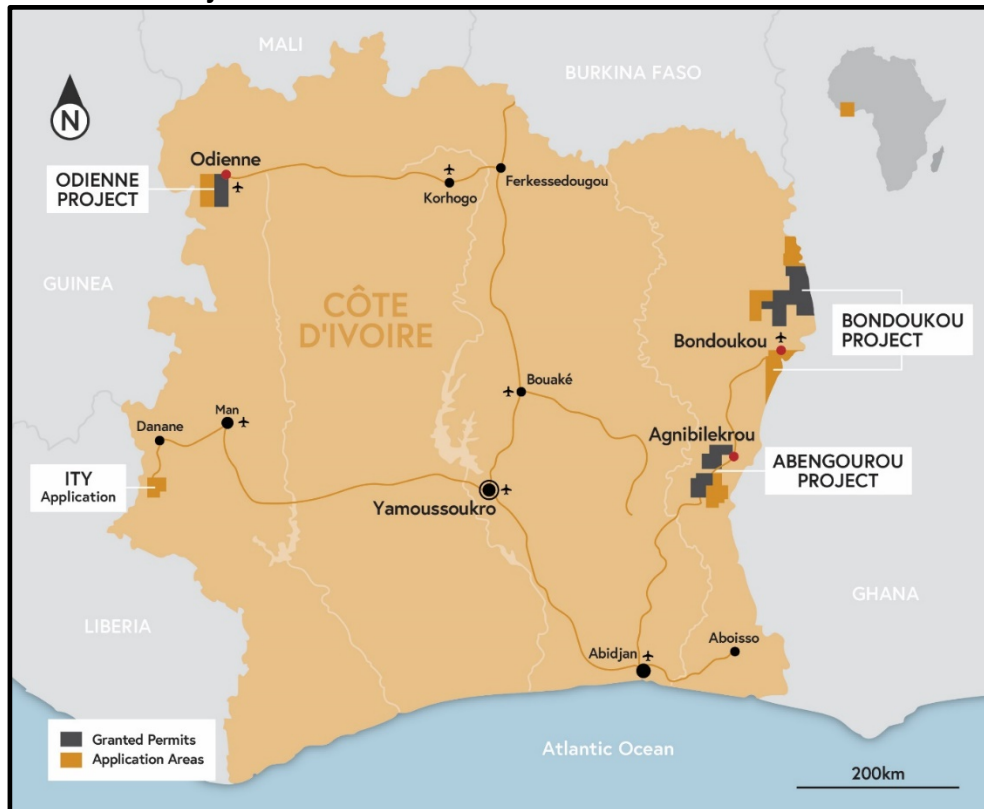




Awalé Resources Defines New Drill Targets at the Odienné Gold Project, Côte d'Ivoire

Figure 1: Awalé's Gold Project Locations



Odienné Targets – Vakaba and Empire Prospects

EMPIRE PROSPECT

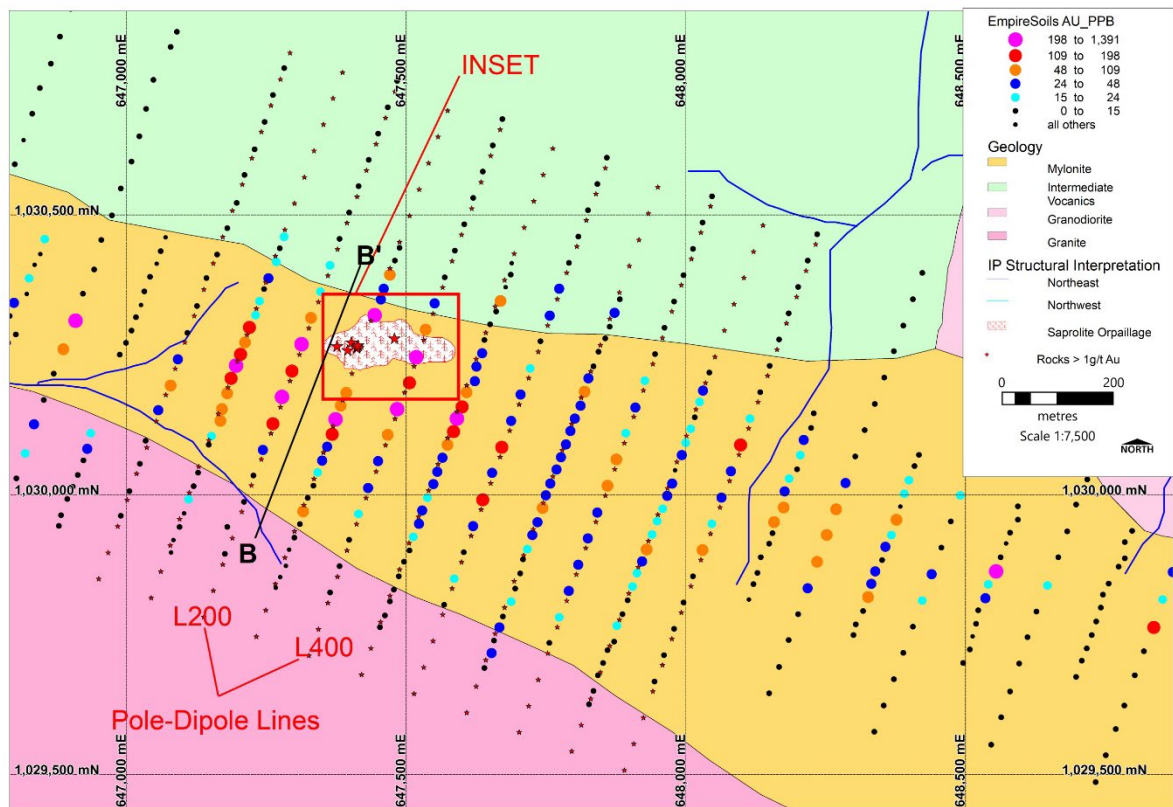


Figure 2: Empire Prospect Gold in Soil Geochemistry over geology. The inset (2b) area is drone photography over the artisanal mining zone showing workings, high grade rock chip samples and the channel sample taken early after commencement of the artisanal mining activity. Figure 3 below depicts the same channel sample.

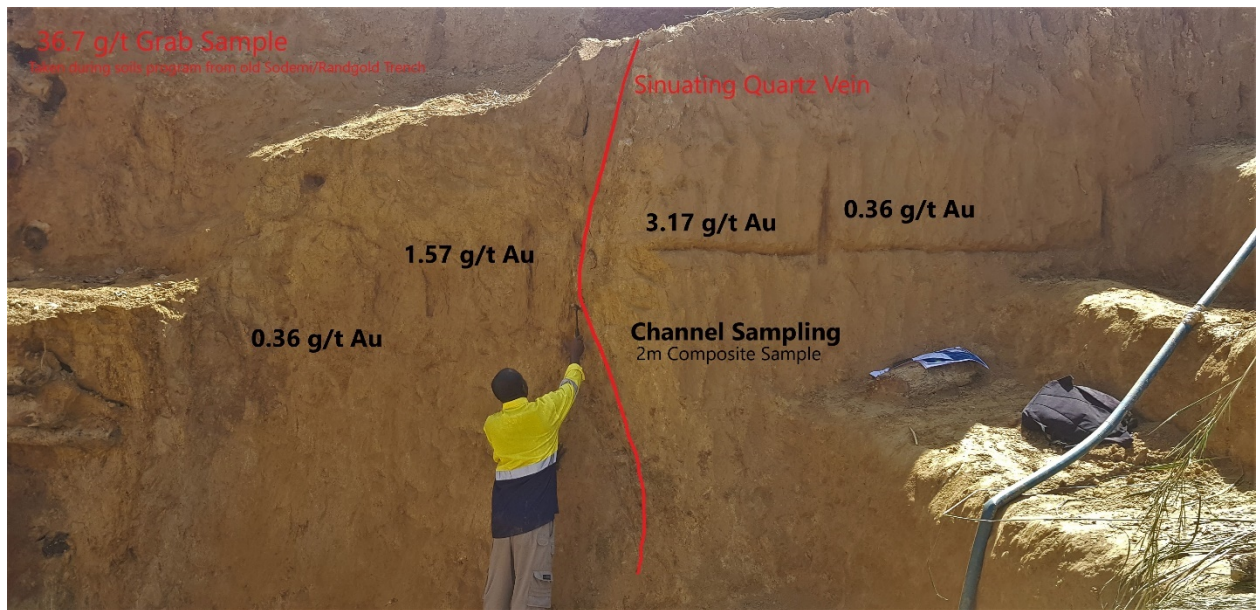


Figure 3: The channel sample (location shown in Figure 2) returned 8m at 0.7 g/t Au including 2m at 3.17 and 2m at 1.57 g/t Au. Sampled as 2 m composites as seen by notches in the pit wall. This locality now mined out by artisanal activity.

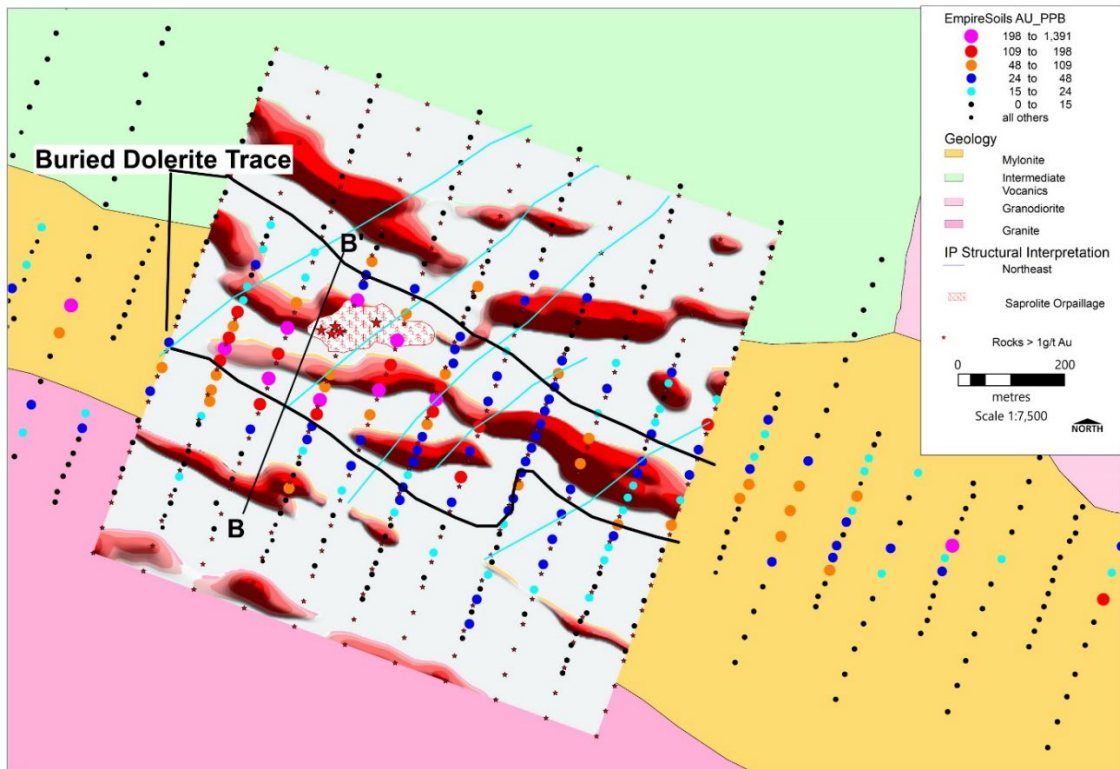
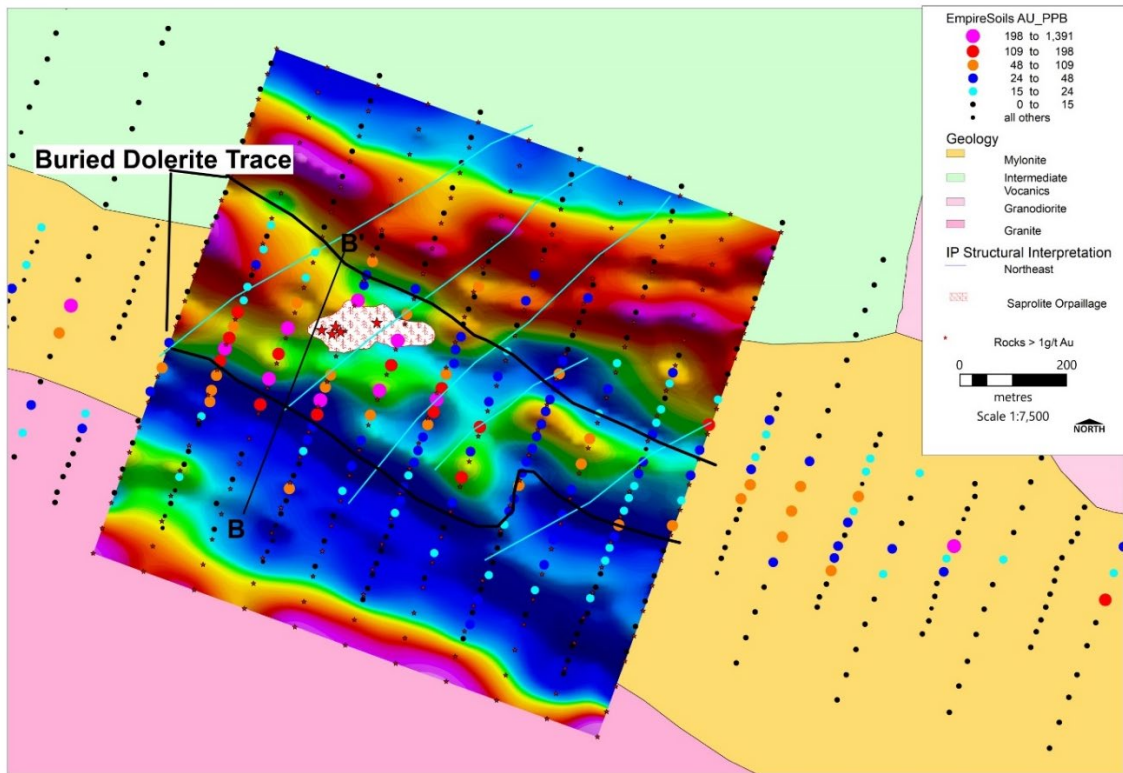


Figure 4: Gradient Array IP – Top is resistivity image – note the close correlation between resistive contacts and the upper and lower Mylonite contacts. Lower image shows ‘Resistive/Chargeable anomalies - those noted within the buried diorite are interpreted to be the gold bearing shear that is the source of the soil anomalism. Representing a compelling drill target for the company.

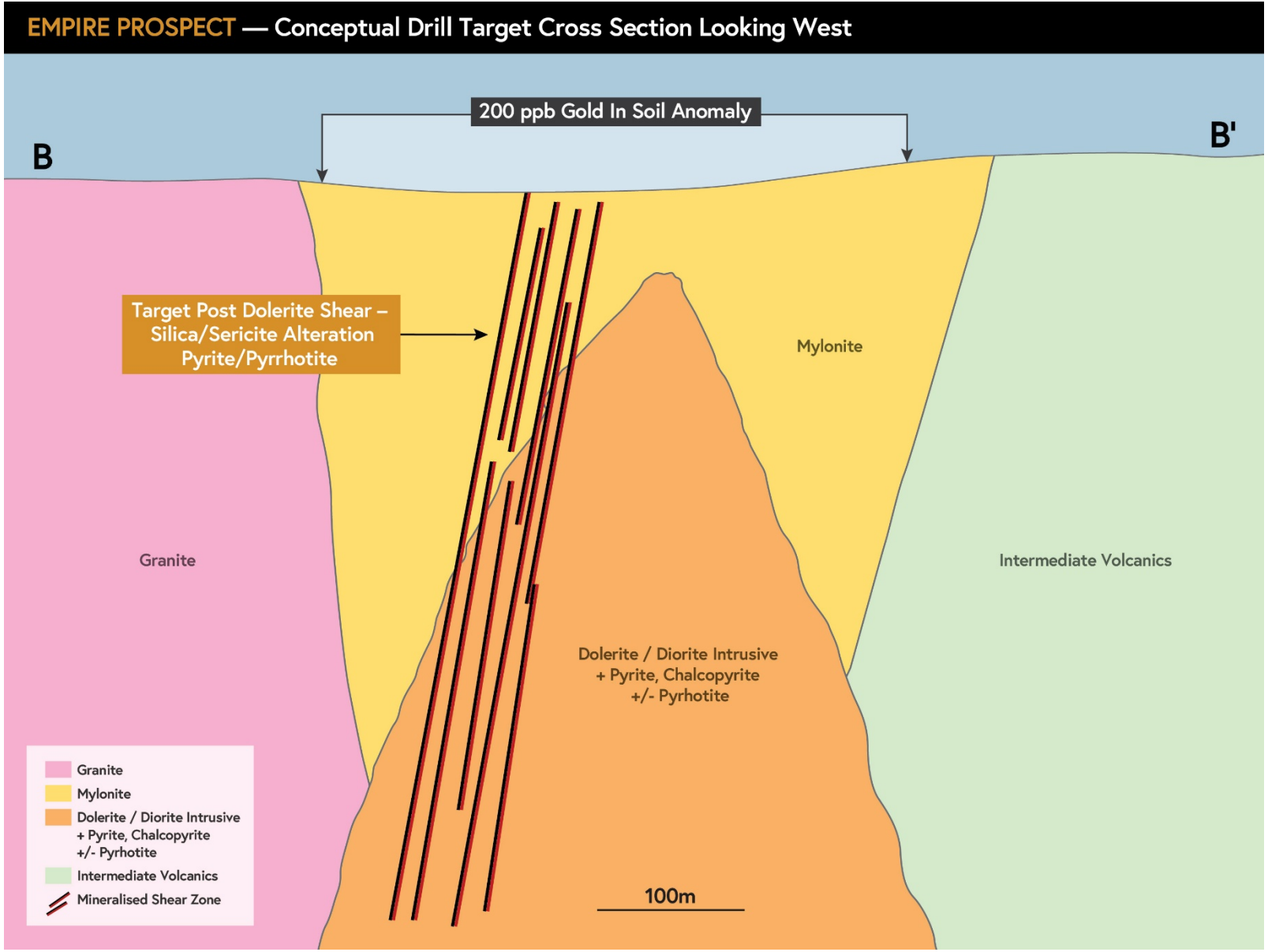


Figure 5- Conceptual drill target along the Empire Prospect's anomalous Shear Zone

VAKABA PROSPECT

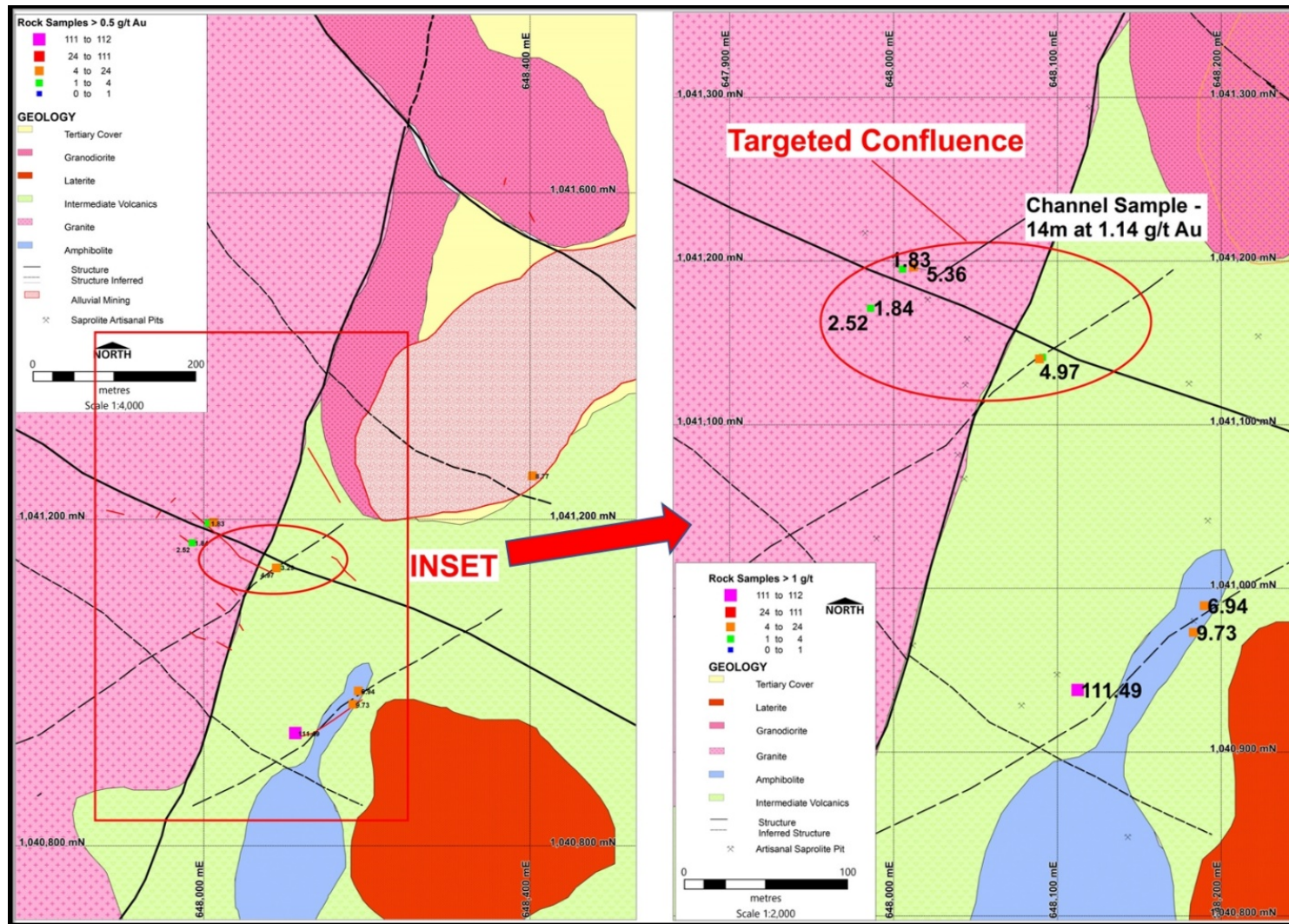


Figure 5: Vakaba Geology, showing NNE trending faulted contact between the granite/granodiorite rocks and intermediate volcanics. The main target (red ellipse) consists of a NW trending quartz vein confluence with the NNE granite contact and a NE trending structure interpreted from geophysics. These confluences are considered potential bonanza lodes for high grade gold mineralization. Note other mapped confluences along strike – these trends are also exploited by artisanal activity.

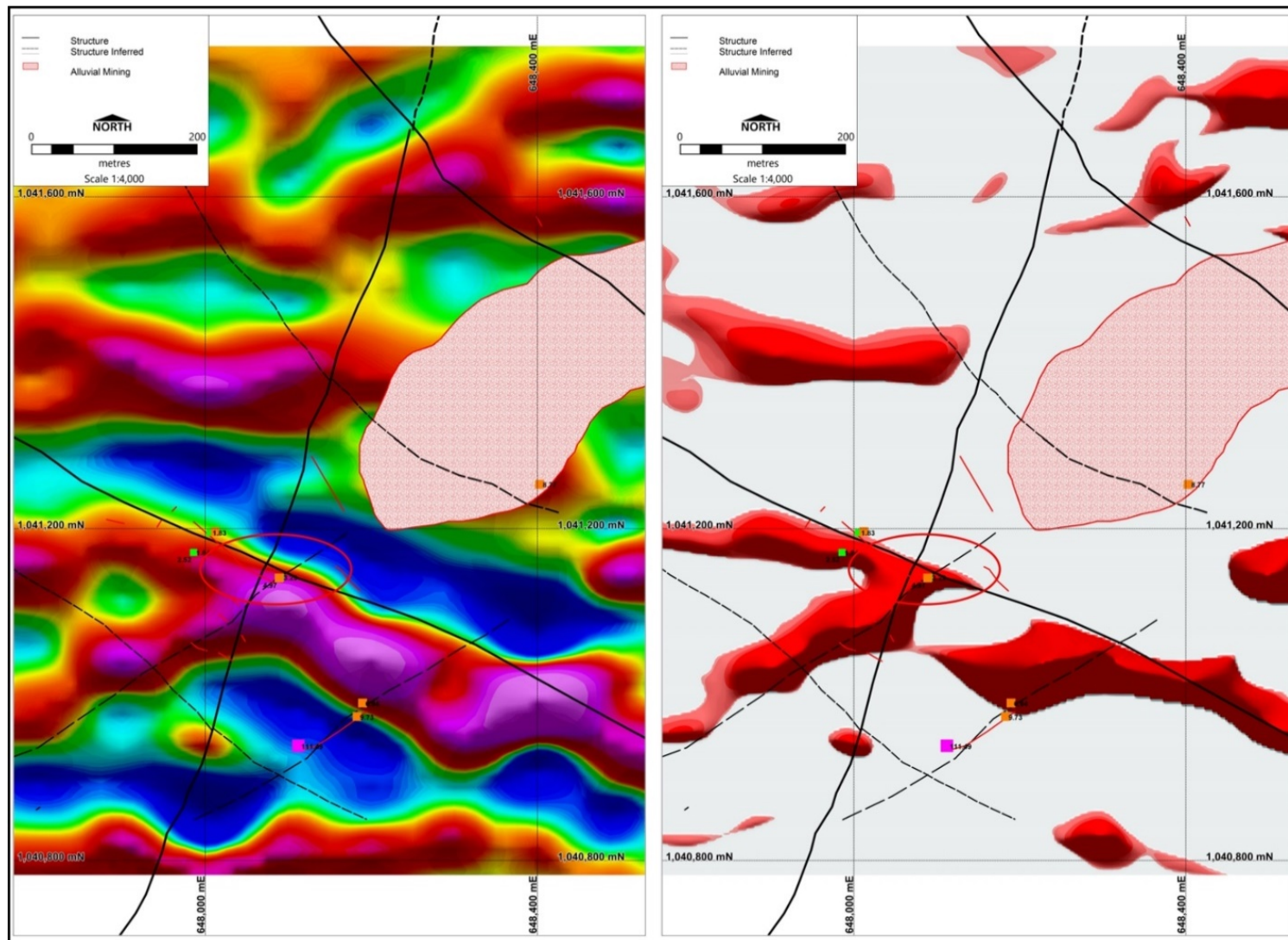


Figure 6: Residual Resistivity (left) and Chargeable Resistive anomaly images for Vakaba.

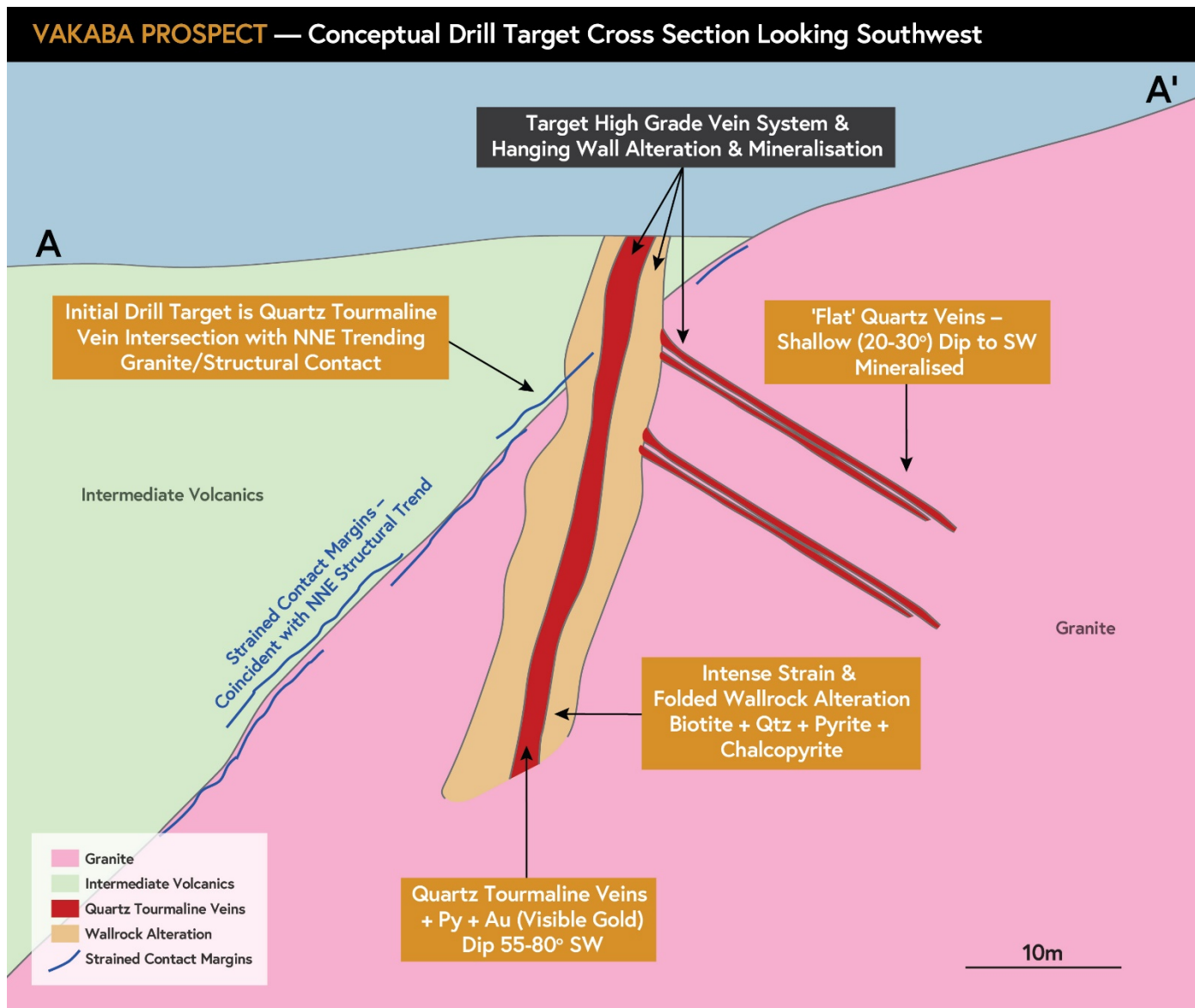


Figure 8 - Conceptual drill targets at the Vakaba Prospect targeting High Grade Vein Systems and Hanging Wall alteration and mineralisation. Section is looking SW through the target zone circled on plan maps in figures 6 and 7.