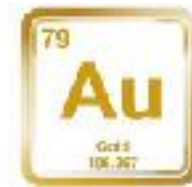




Awalé Resources Limited

Q3 Investor Presentation

ARIC: TSXV



Forward Looking Statements

This presentation contains forward-looking information within the meaning of Canadian securities laws (collectively “forward-looking statements”). Forward-looking statements are typically identified by words such as: believe, expect, anticipate, intend, estimate, plans, postulate and similar expressions, or are those, which, by their nature, refer to future events. All statements that are not statements of historical fact are forward-looking statements. Forward-looking statements in this presentation include but are not limited to statements regarding the closing of the Acquisition and Private Placement, and ability to achieve results, creation of value for Company shareholders, achievements under the Newmont JV, planned drilling, commencement of operations, . Although the Company believes any forward-looking statements in this presentation are reasonable, it can give no assurance that the expectations and assumptions in such statements will prove to be correct.

The Company cautions investors that any forward-looking statements by the Company are not guarantees of future results or performance and that actual results may differ materially from those in forward-looking statements as a result of various factors, including the potential inability to obtain required regulatory approvals and satisfy other applicable closing conditions; possible adverse impacts due the global outbreak of COVID-19; the Company's inability to generate sufficient cash flow or raise sufficient additional financing requirements; volatility in metals prices; the ability of the Company to retain its key management employees and skilled and experienced personnel; conflicts of interest; litigation or other administrative proceedings brought against the Company; actual or alleged breaches of governance processes or instances of fraud, bribery or corruption; exploration, development and mining risks and the inherently dangerous nature of the mining industry, and the risk of inadequate insurance or inability to obtain insurance to cover these risks and other risks and uncertainties; property and mineral title risks including defective title to mineral claims or property; changes in national and local government legislation, taxation, controls, regulations and political or economic developments in Canada and Cote d'Ivoire; equipment shortages and the ability of the Company to acquire necessary access rights and infrastructure for its mineral properties; environmental regulations and the ability to obtain and maintain necessary permits, including environmental authorizations and water use licences; extreme competition in the mineral exploration industry; delays in obtaining, or a failure to obtain, permits necessary for current or future operations or failures to comply with the terms of such permits; risks of doing business in Cote d'Ivoire , including but not limited to, labour, economic and political instability and potential changes to and failures to comply with legislation; the Company's common shares may be delisted from the TSX Venture Exchange if it cannot maintain compliance with the applicable listing requirements; and other risk factors described other filings with Canadian securities regulators, which may be viewed at www.sedar.com . Any forward-looking statement speaks only as of the date on which it is made and, except as may be required by applicable securities laws, the Company disclaims any intent or obligation to update any forward-looking statement, whether because of new information future events or results or otherwise



Defining a New World Class District



**SIGNIFICANT
FOOTHOLD IN A
MAJOR GOLD
PROVINCE**
West Africa > 300 Moz
Province



**NEWMONT JOINT
VENTURE**
3M Budget for 2023 Field
Season



**FIRST MOVER WITH
MULTIPLE HIGH-GRADE
DISCOVERIES**
High Quality Pipeline of
Targets with Strong News
Flow



**EXPERIENCED
TECHNICAL TEAM**
Proven
Explorers

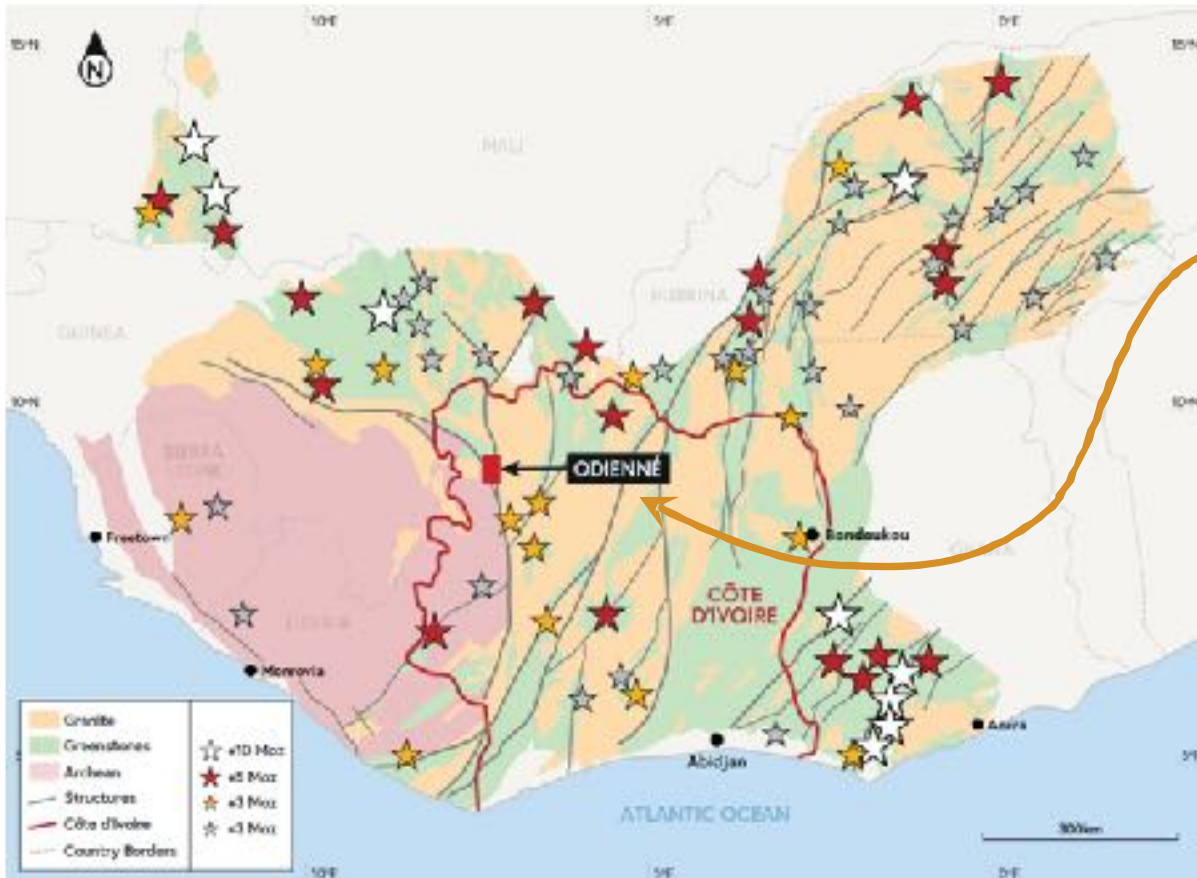
The Odienné Project – A World Class Setting



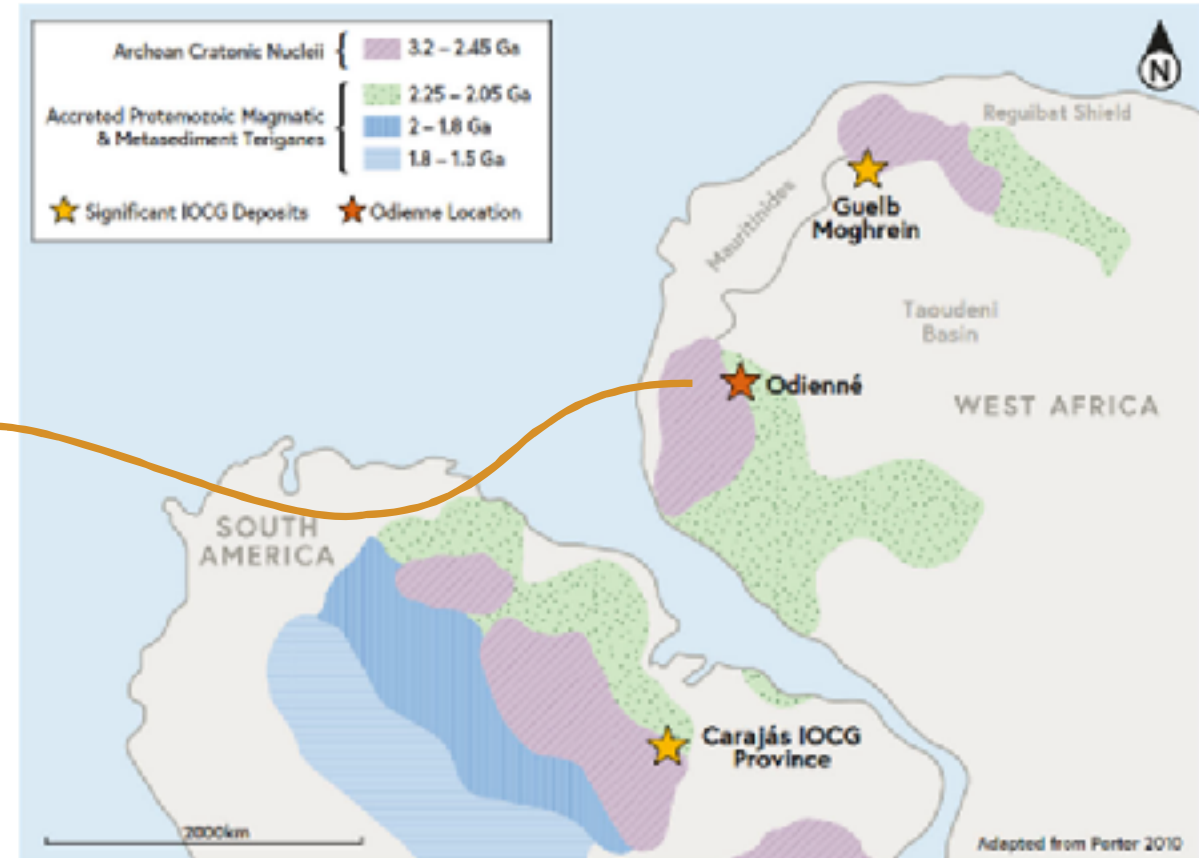
SIGNIFICANT FOOTHOLD IN A MAJOR GOLD PROVINCE

West Africa > 300 Moz Province

West African Gold Deposits



IOCG Crustal Setting for Odienné & Comparison to Central Amazonian Craton



- Multiple + 10Moz deposits in West Africa
- Odienné - Same Geological Setting as Carajás (8bt at 0.9%Cu and 0.2g/t Au)
- Recognition of New District in West Africa/Cote d'Ivoire

The Odienné Project - A New IOCG district in West Africa



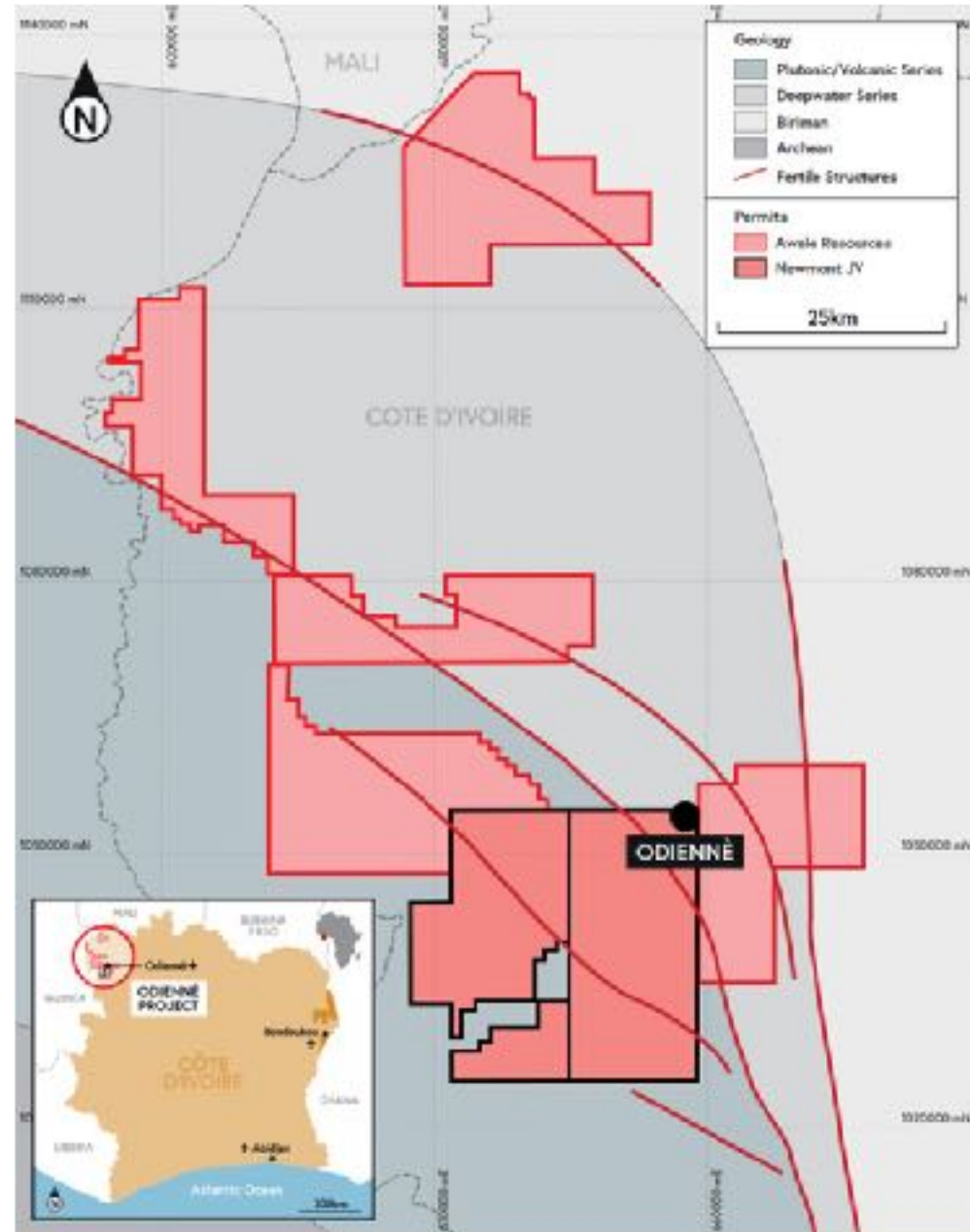
NEWMONT JOINT VENTURE
3M Budget for 2023 Field Season

The Odienné Project

- 2462 Km² of Tenure in a newly identified IOCG setting.
- Joint Venture (JV) with Newmont - Funding a 3m Budget for 2024
- IOCG “Iron Oxide Copper Gold” districts are Major Global Metal Contributors

Newmont JV

- Up to US\$ 15 million in staged exploration funding to earn up to a total 75% of the Odienné Project. Phase One - US\$ 5 Million, Phase Two - US\$ 10 Million.
- Initial JV over 2 of 7 Permits
- Breakthrough discoveries – Sceptre, Charger, Empire.

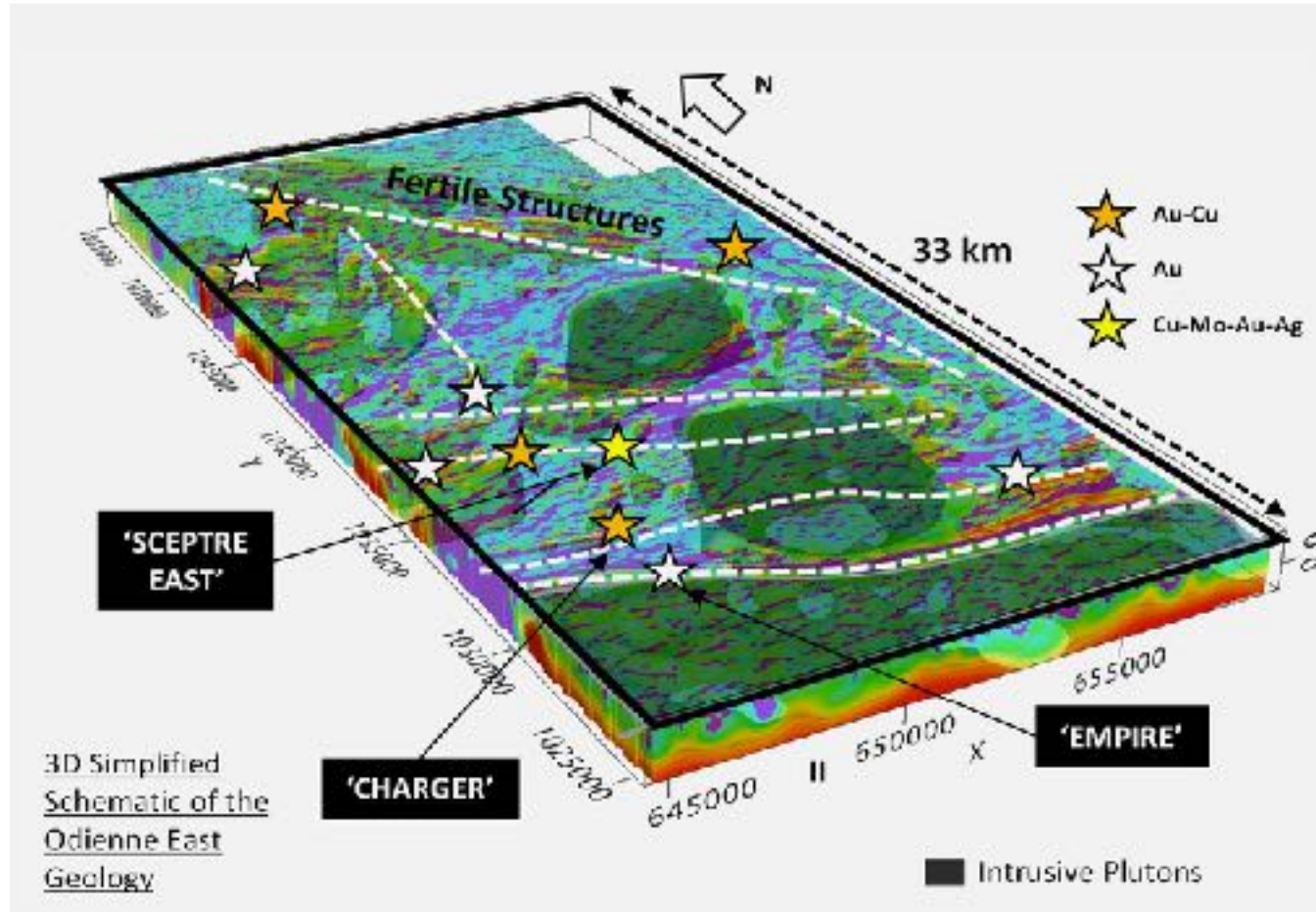


The Odienné Project – A Pipeline of Discoveries



FIRST MOVER WITH MULTIPLE HIGH-GRADE DISCOVERIES

High Quality Pipeline of Targets with Strong News Flow



- Multiple Targets with similar alteration and mineralization fingerprint
- Variations on the IOCG/Intrusive theme
- District Scale Alteration – a New Camp in West Africa

Selected Results

- **CHARGER** – 32m @ 3.0 g/t Au, 0.17% Cu and 6.6 g/t Ag from 74m. Incl. 4m @ 12.4 g/t Au, 0.7% Cu and 30 g/t Ag from 78m
- **EMPIRE** - 27m at 3.1 g/t Au from 43.2m (OEDD-01), and 15m at 13.1 g/t Au from 69m (OEDD-24)
- **SCEPTRE EAST** - 121m @ 0.18% Cu, 0.21 g/t Au, 2.4 g/t Ag and 136 ppm Mo (0.43 Cu Eq.) from 11m. Including 22m @ 0.43% Cu, 0.5 g/t Au, 6.6 g/t Ag and 171 ppm Mo (0.93% Cu Eq) from 72m

Value Creation Through Discovery and Advancing Resources

ODIENNE

NEWMONT JV –

Focus on IOCG

3M USD JV Exploration Budget

ö >5000m Drill Budget for 2023

ö Permit Scale Geophysics and
Geochemistry – Targeting tier 1 deposits

Sceptre/Charger

- Progress toward resource development drilling
- Follow Up drilling Has commenced on these targets

Permit Wide – 2023

- Discovery Drilling - High Order Lando and Sceptre Main Targets
- Apply IOCG/Hybrid Model for target generation and definition over entire permit area
- Airborne Geophysics – Aeromagnetic and Radiometric Survey
- Results driven follow-up drilling – c. 5,000m RC/DD/Aircore.

New Odienné Opportunities – Recent Funding for Awalé Permits

- Push for existing application to the north of the Newmont JV to be granted – then Initiate systematic discovery driven exploration – Geochem/Geophysics/Mapping
- Development of target pipeline

Corporate Summary



EXPERIENCED TECHNICAL TEAM

Proven Explorers

BOARD TEAM



Andrew Chubb
CEO



Robin Birchall
Chair



Derk Hartman
Director



Stephen Stewart
Director

MANAGEMENT TEAM



Andrew Chubb
CEO



Sharon Cooper
CFO



Andrew Smith
Chief Geologist



Karl Akueson
Advisor Cote d'Ivoire

Awalé Share Structure

Shares in Issue	54.4 M
Warrants Exp July 2023 Warrants Exp March 2024 Warrants Exp May 2026	5.5 M 2 9.6
Options	5.1 M
Fully Diluted Shares in Issue	76.6 M
Market Capitalisation (@12c/share)	C\$6.5 Million



AWALÉ
RESOURCES



THANK YOU!

ANDREW CHUBB, CEO

a.chubb@awaleresources.com

p. +356 99139117

TSX-V: ARIC