

AWALÉ
RESOURCES

Awalé Resources Intersects new High Grade Mineralization at the Empire Discovery, Odienné, Côte d'Ivoire

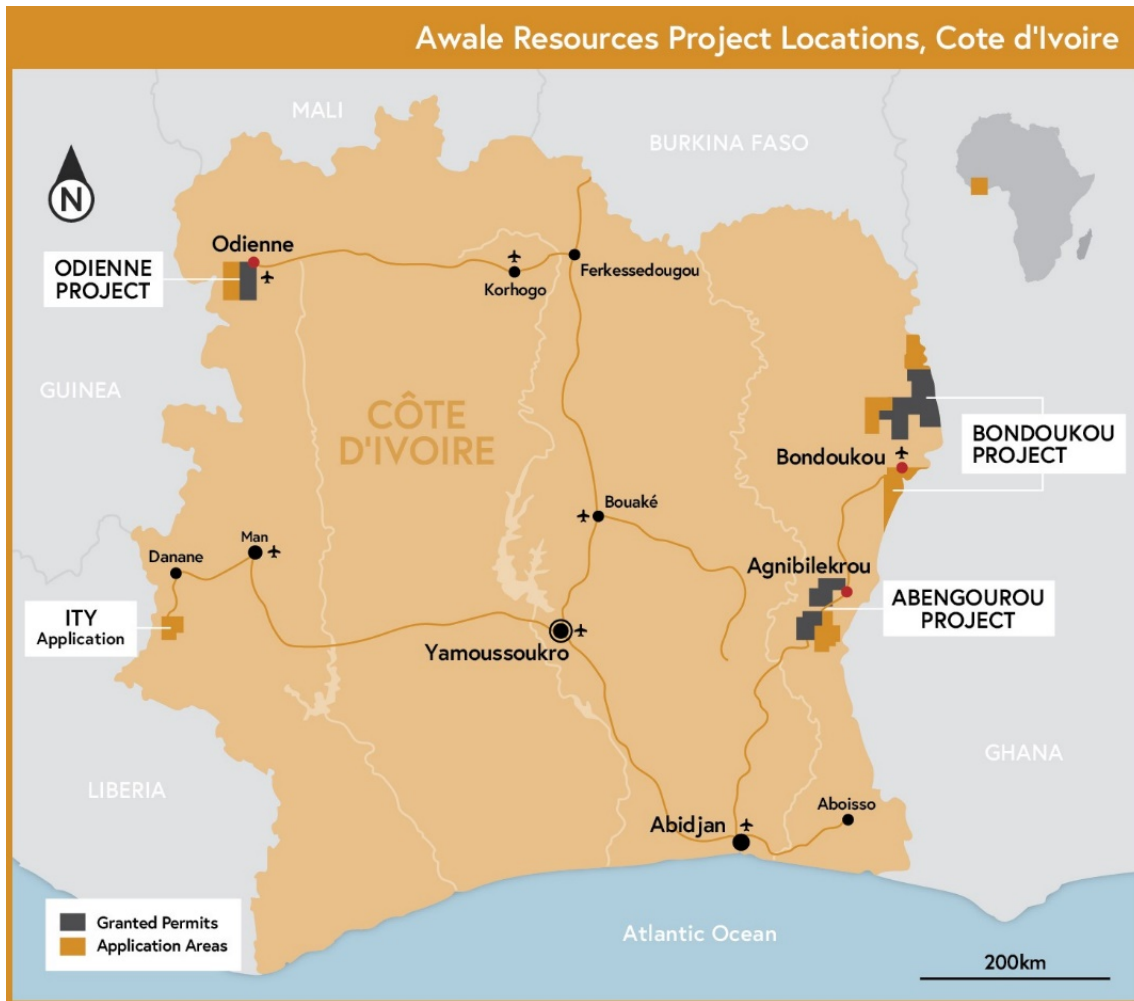


Figure 1: Awalé Project Location – Côte d'Ivoire

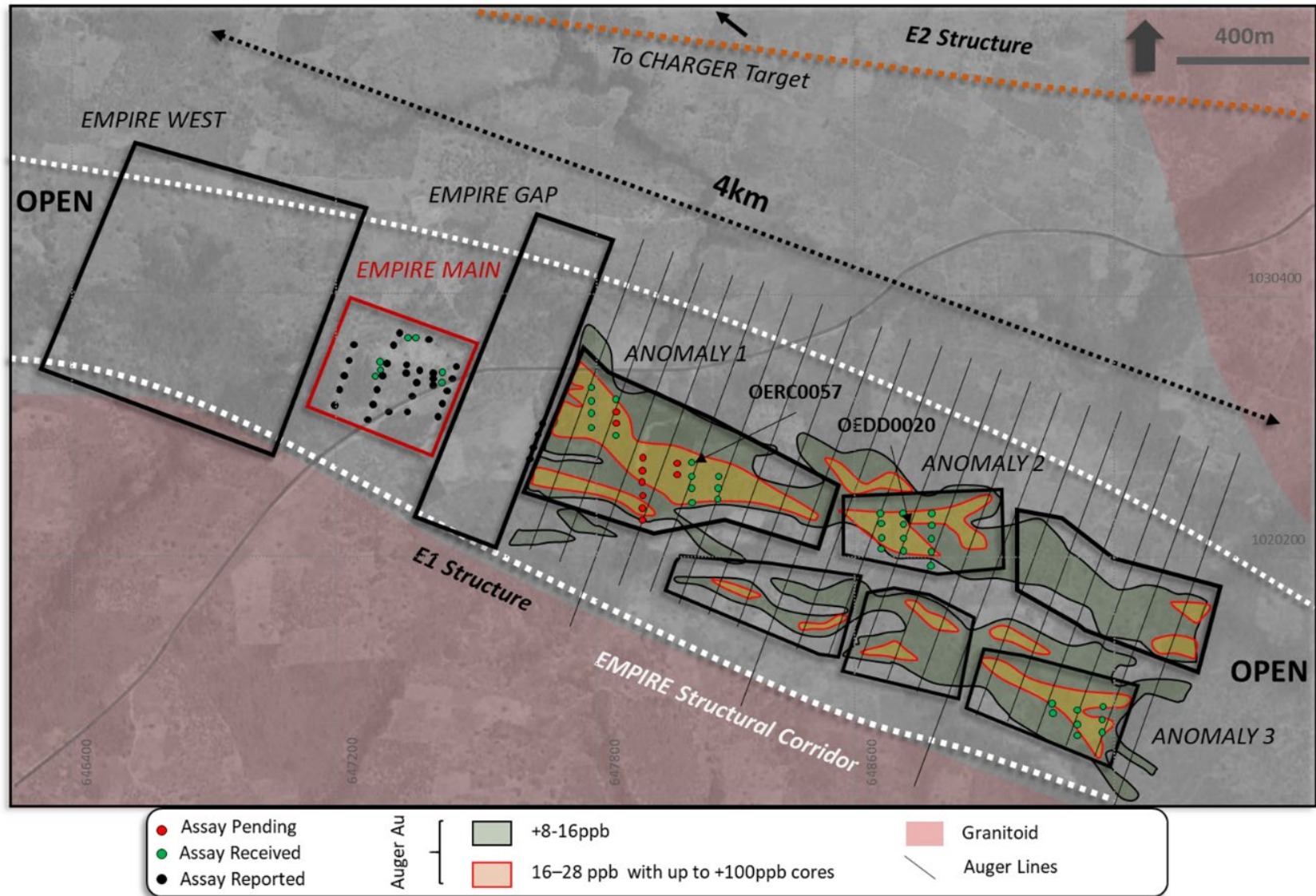


Figure 2: Empire Prospect Showing Empire structural corridors, overlain by gold in auger anomalies, the Empire Main discovery, extension targets and all completed diamond and RC drilling. Holes OERC-57 (6m at 2.2g/t Au) and OEDD-20 (1m at 4.8g/t Au) have exceptional grade alteration in first pass scout holes. The Extension targets are a 2.5km fraction of the 20 km corridor where the Empire Main discovery demonstrates multi-phase and high grade gold bearing fluid flow along a major deep seated structure.

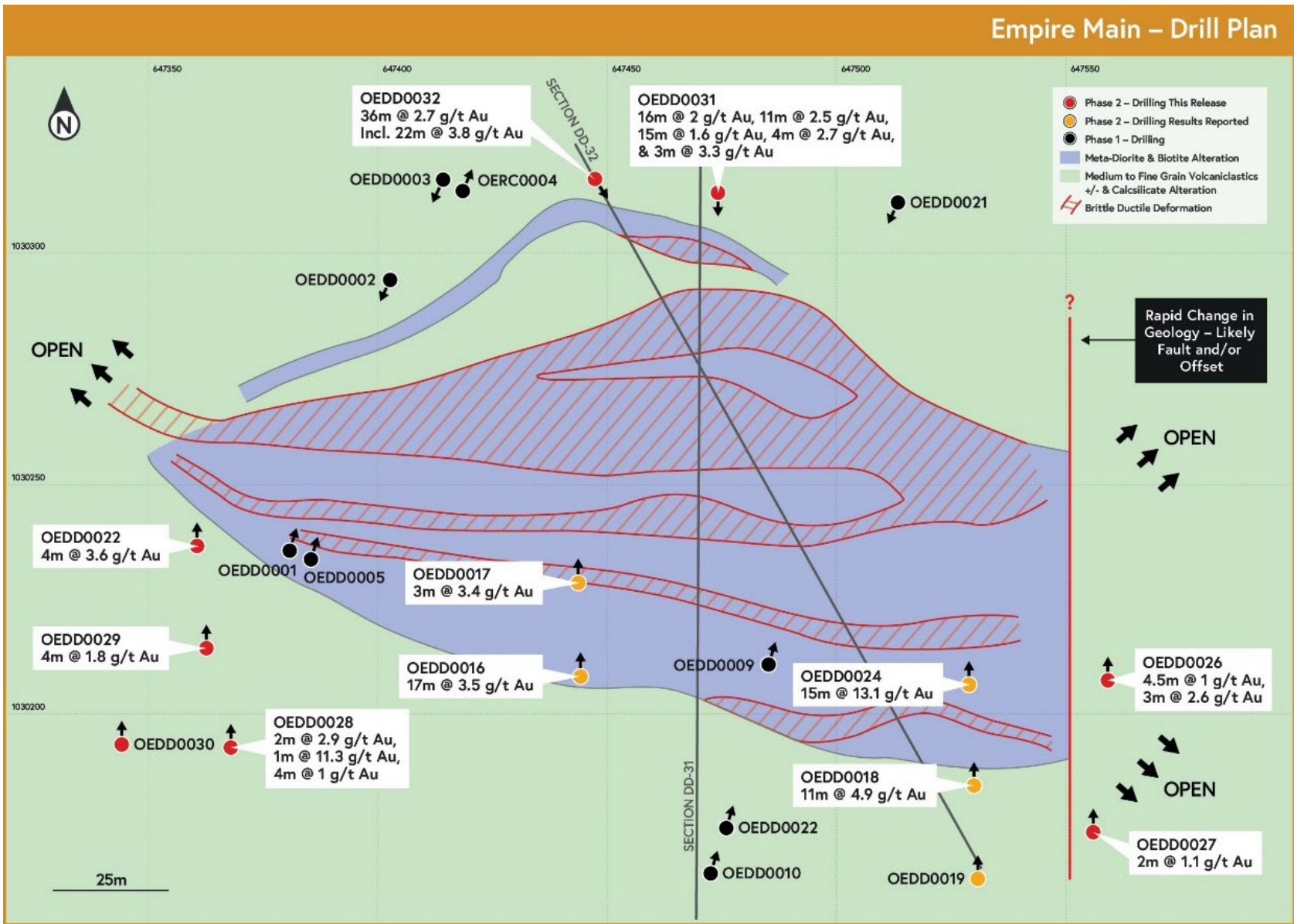


Figure 3: Empire Main Collar Plan over simplified geology. Red hatch depicts brittle ductile deformation and gold mineralized zones. Cross Section lines are shown for cross sections in Figures 4 and 5. Mineralisation remains open along strike.

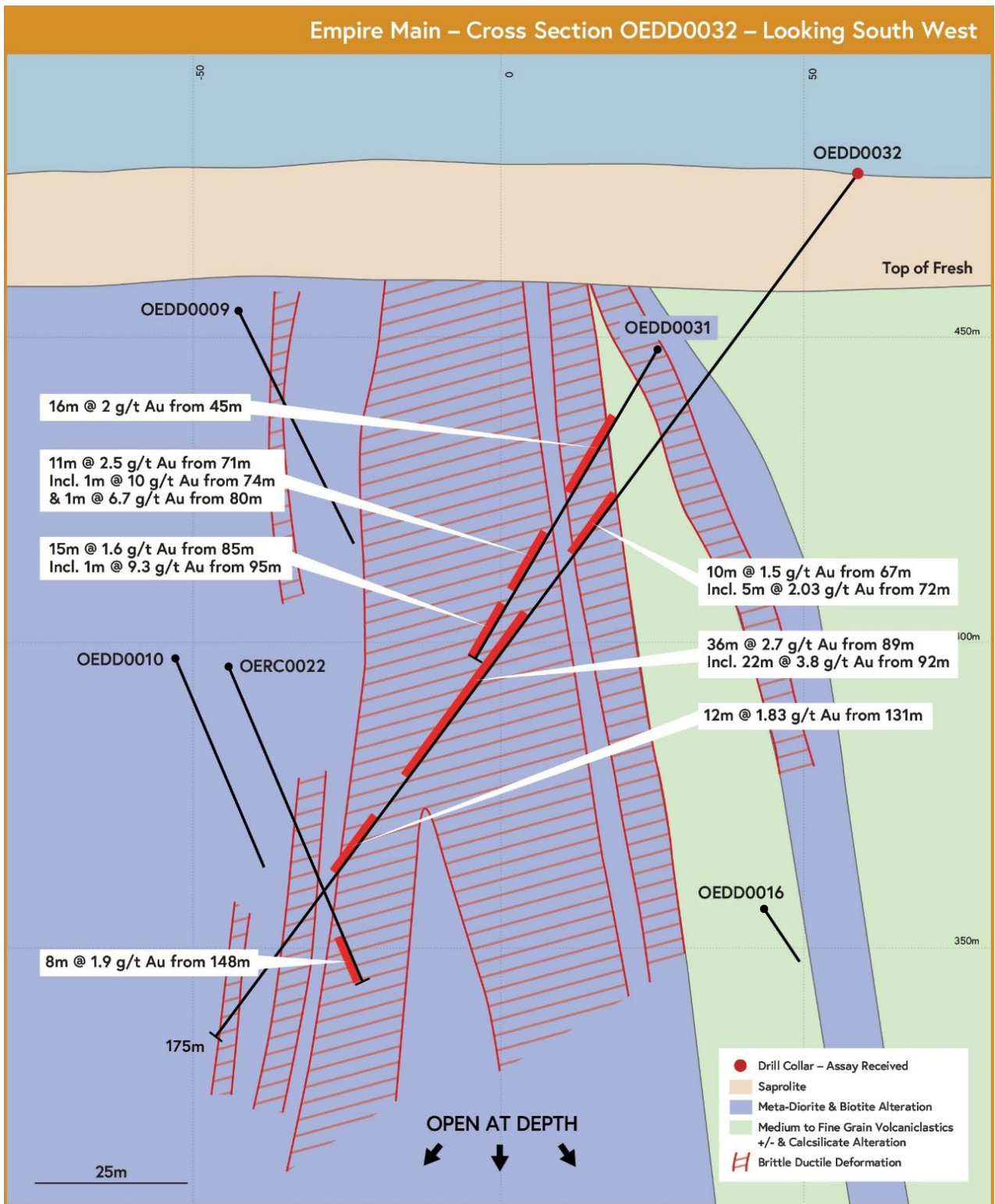


Figure 4: Cross Section OEDD-32 – drilled from northwest to southeast (toward 150°). Intersected a previously poorly recognised NE trending and NW dipping vein array. This drill hole has given a more consistent higher grade and and greater mineralised width than previous holes. Other holes on this section pass oblique to OEDD-32.

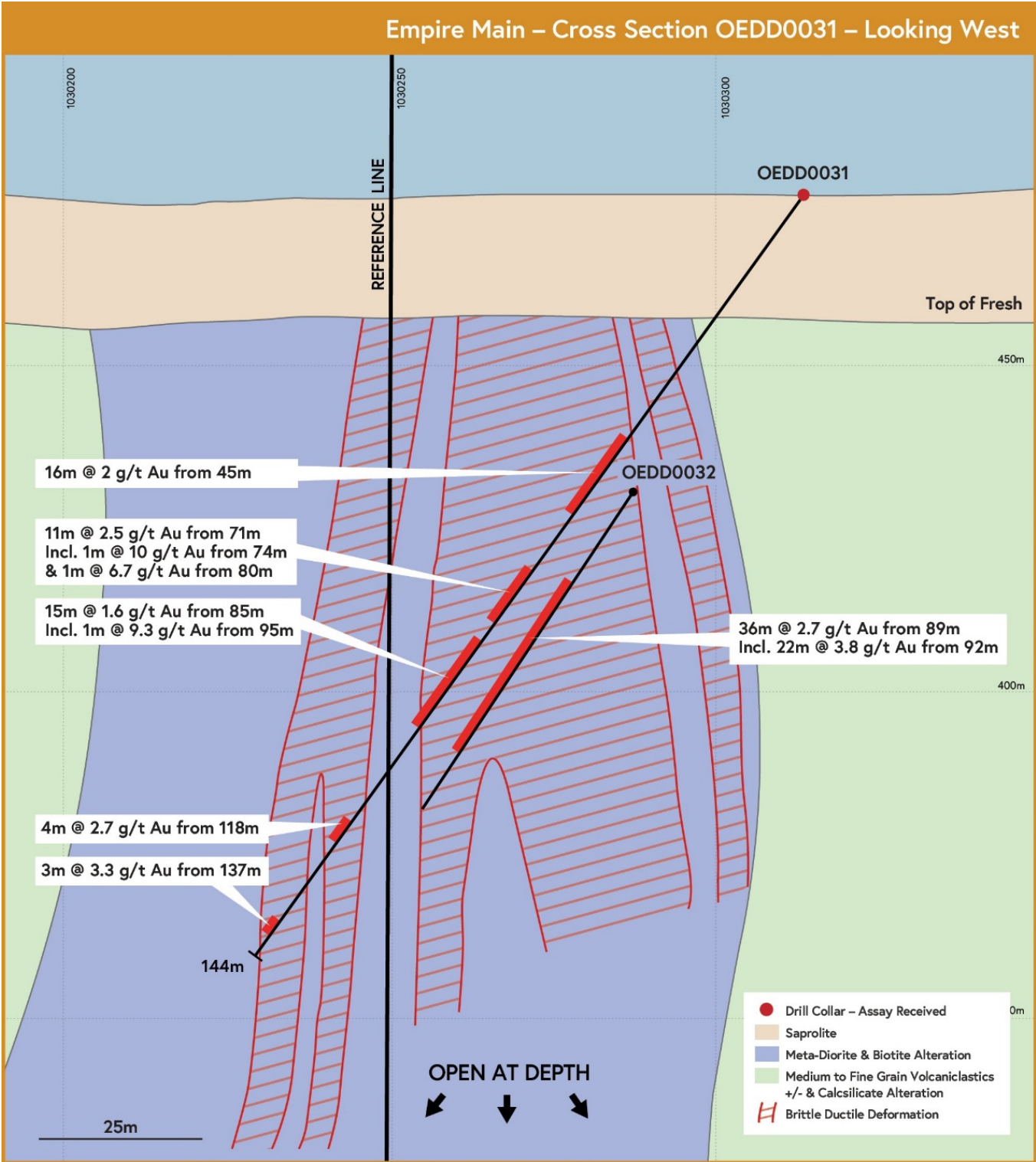


Figure 5: Cross section OEDD-31, drilled from north to south. Other Holes on this section pass Oblique to OEDD-31.

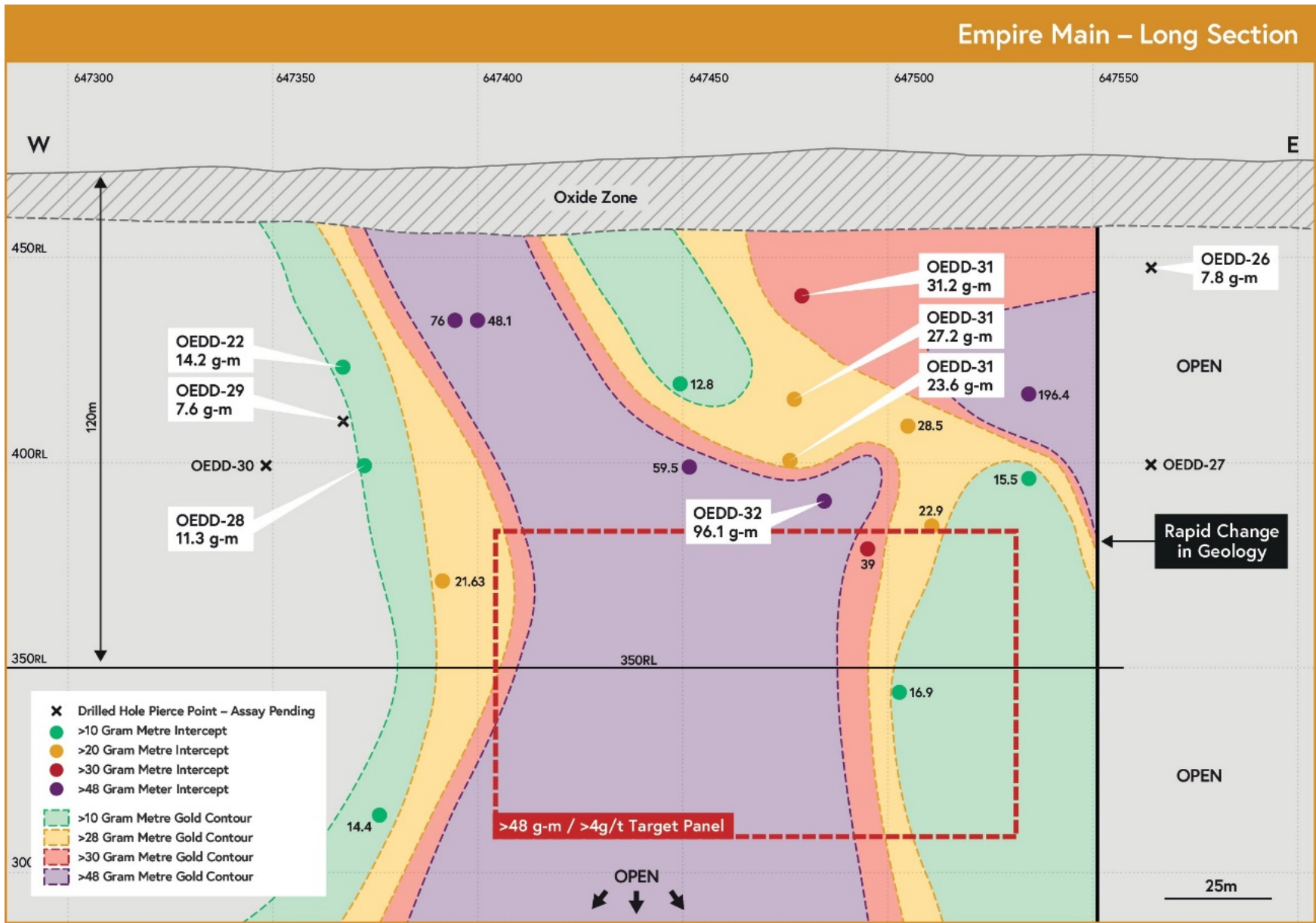


Figure 6: Gram-Metre Long Section looking North, cut at 1030250N. Shows high grade down plunge target panel for follow on Diamond drilling expected to commence before end December (After completion of RC).