

Awalé Resources Update on Drill Targeting at the Odienné Gold-Copper Joint Venture, Côte d'Ivoire

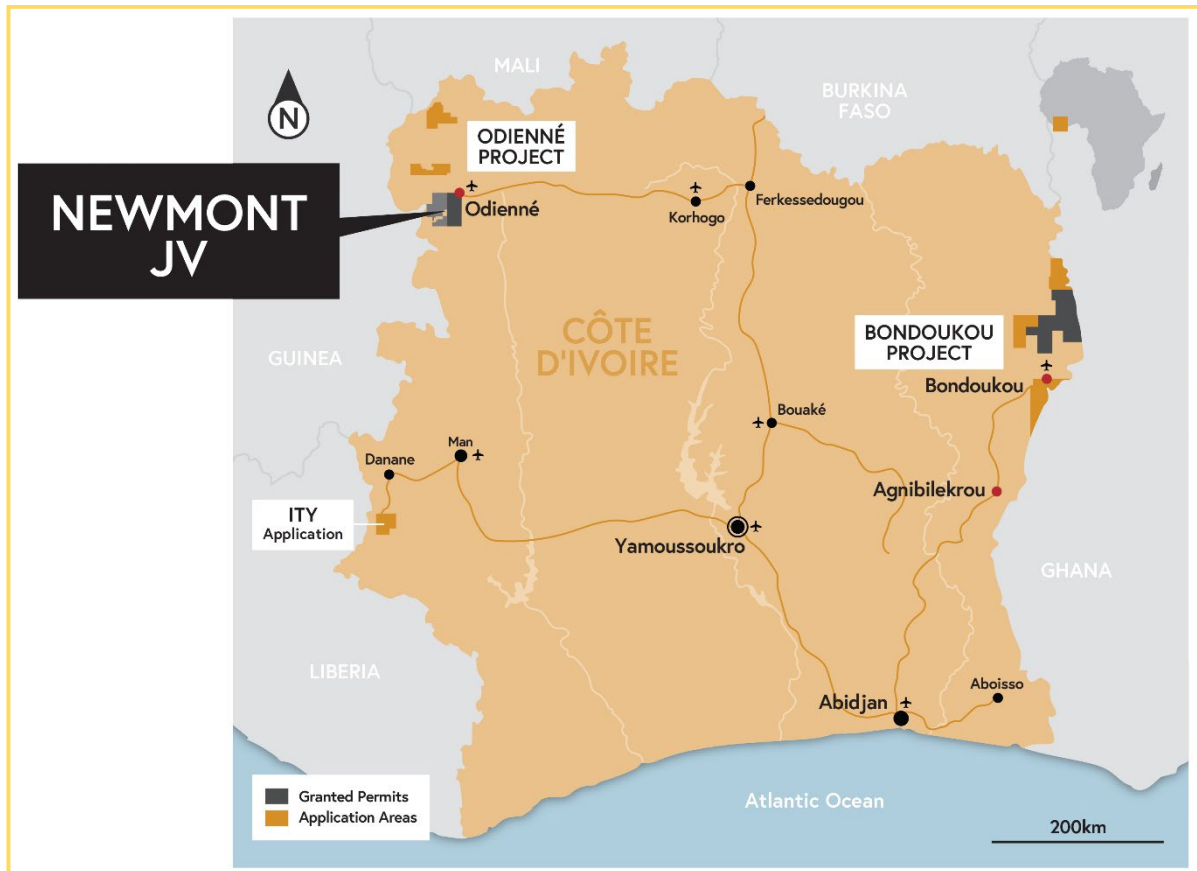


Figure 1: Location of Awalé Projects in Cote d'Ivoire

Odienné – Gold & Copper Targets

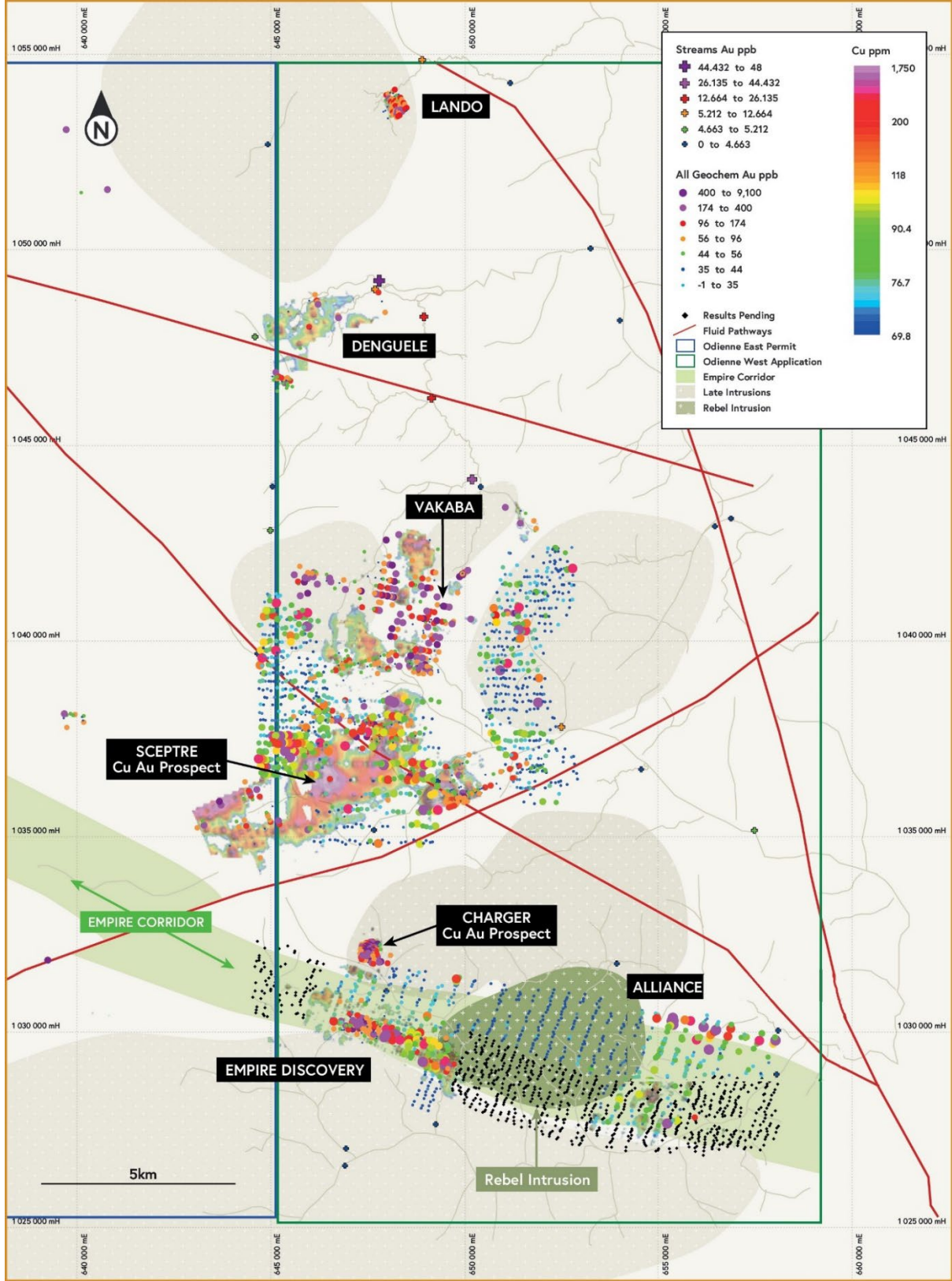


Figure 2: Odienné Project Target Locations

Sceptre Prospect – Gold in Termitaria Geochemistry

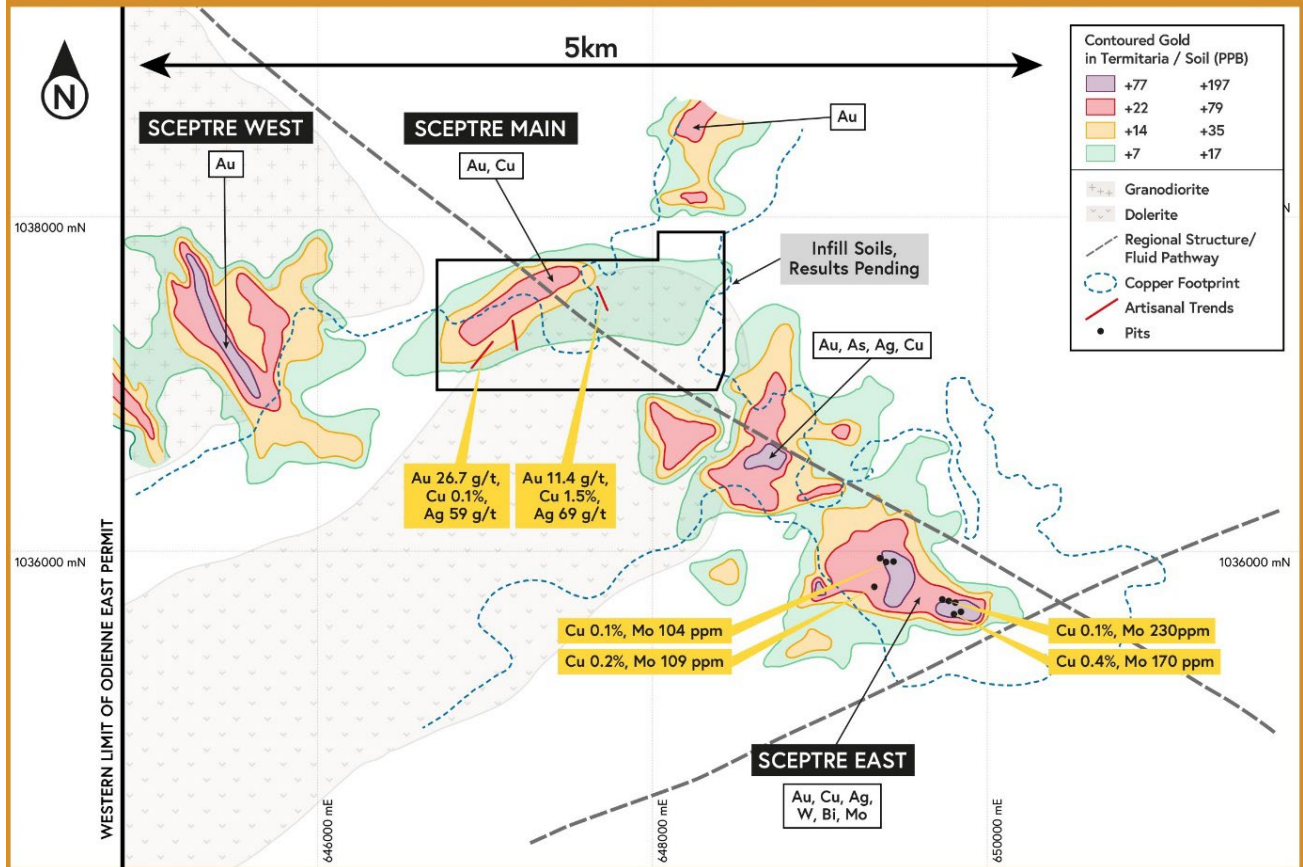
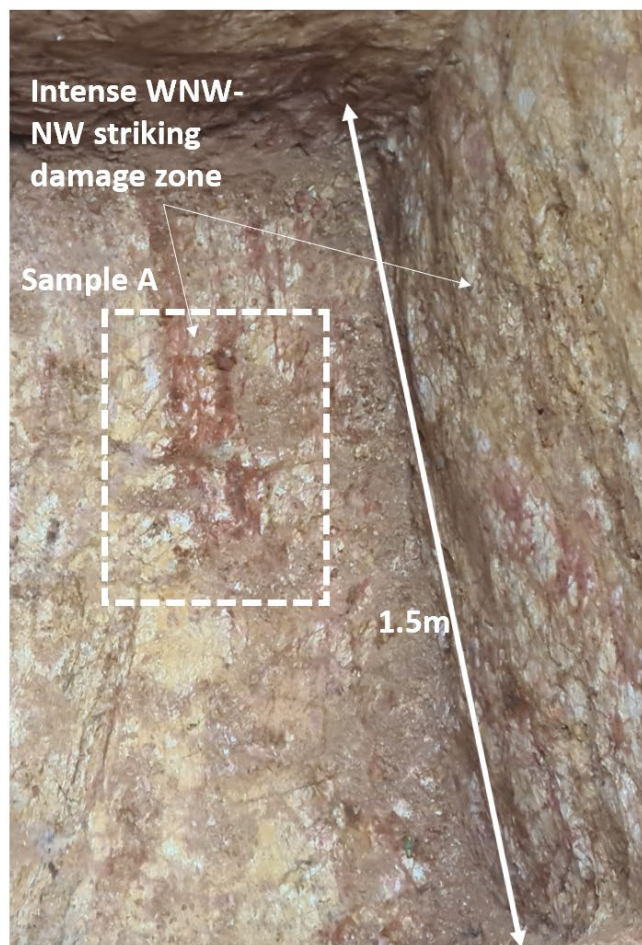


Figure 3: Sceptre Targets, gold geochemistry in soil and termitaria in-situ/residual sampling. Pitting at Sceptre East has confirmed the Cu-Mo anomalism. Cu, Ag, and Mo Analysis reported in this figure are from pXRF analysis, Au in rock chips are from fire assay.

Sceptre East Pitting – Confirming the ME footprint



SCEPTRE PIT PT015: Sample A (ppm); Cu 986, Bi 121, Co 134, As 12, Mn 133, Zn 75. Strong Fe oxides are related to a strong to intense fracture network in a fine to medium grained felsic host. Locality is 40m WNW of a high order 554ppb Au and 469ppm Cu in Termitaria anomaly .

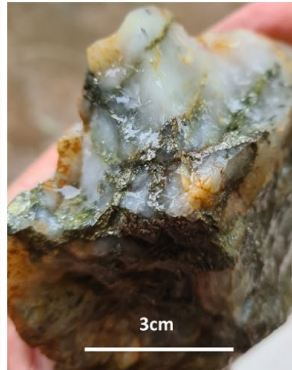
Figure 4: Pitting at the Sceptre East Target – up to 0.4% Cu and 230 ppm Mo, high order Cu values hosted in intense deformation zones in pit floor composite sampling.

Sceptre Main: Targeting a stratigraphic control to Cu-Au mineralisation



(Left) Looking NE, artisanal pit exposing a subvertical to NW dipping, mineralised contact between shale and dolerite; Grades running up to 27 g/t Au, 59g/t Ag and 0.11% Cu.

(Right & below) Example of high grade polymetallic veins at this locality



Sceptre Main: Targeting a high grade, polymetallic vein array



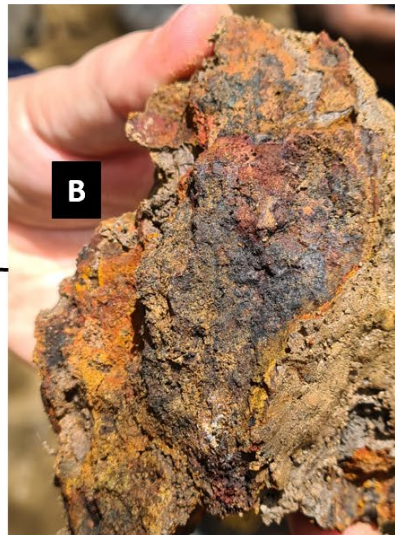
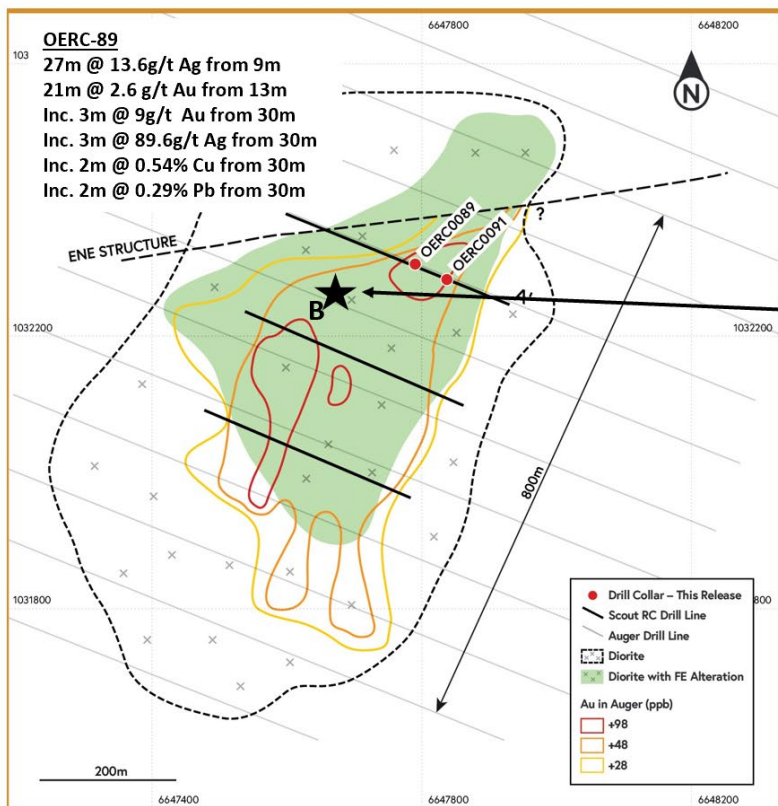
(below) Quartz – chlorite – sulphide vein(s) at the HW contact of a Dolerite.



(left, above) Brecciated quartz vein with strong iron oxidation, gossanous in places. The High grade, polymetallic style has returned grades up to 11.2 g/t Au, 69 g/t Ag and 1.5% Cu

Figure 5: Artisanal mining examples from the Sceptre Main Target – up to 27 g/t Au and 69 g/t Ag and 1.5% Cu

Charger: Gossan discovery indicating a new orientation to mineralisation



(Above) WNW trending gossan is exposed approx. 100m southwest of the high grade intercepted in OERC0089. pXRF results;

- Ag 38 ppm (grams/tonne)
- Pb 1.64%
- Cu 1545ppm
- Bi 702 ppm

(Above gossan was crushed and sieved to -80 mesh prior to pXRF analysis, reported results are an average of 2 analyses)

Figure 6: Charger Target- Locality of gossan sample relative to drilling – point 'B', c. 100m west southwest of drill hole OERC-89. All drill hole intercepts are reported as Fire Assay Gold and ICP/MS for other elements while the gossan sample is reported as pXRF results.